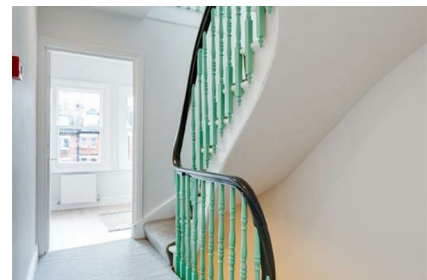
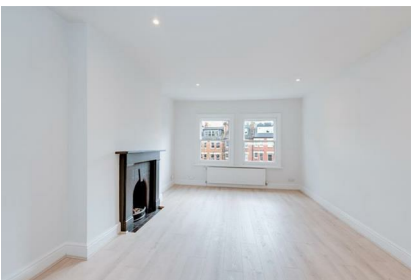


# Parkheath

*Sold on Service*

---

## Primrose Gardens NW3 £3,600 PCM (£831 per week) - Camden Band E

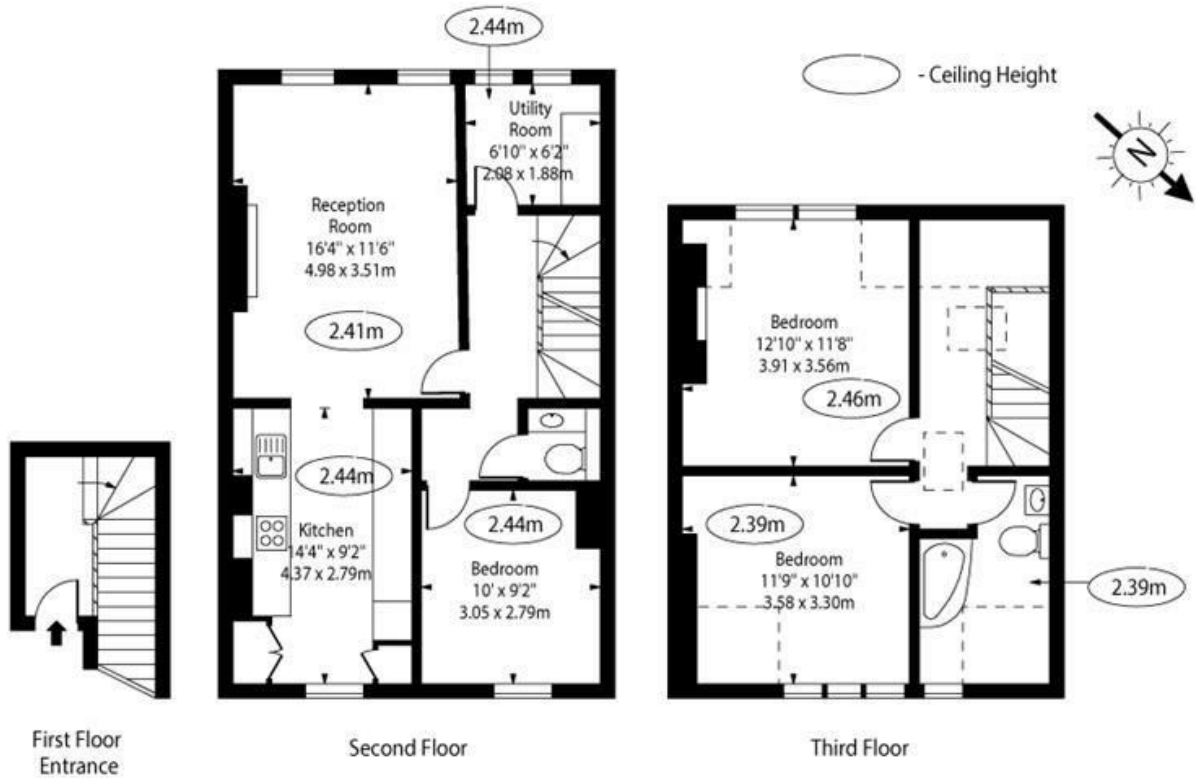


Newly refurbished 3 bedroom upper maisonette  
Neutral decor with wood floors  
Magnificent kitchen diner  
Third bedroom /study  
Moments to Belsize Park tube

2nd and 3rd floors in red brick conversion  
Reception with feature fireplace  
2 double bedrooms  
Luxury 3 piece bathroom  
Close to Englands Lane shops and cafes

Belsize Park Office 020 7431 3104

## Primrose Gardens, NW3 4TP



Approx Gross Internal Area 1022 Sq Ft - 94.95 Sq M

Approx Floor Area Including Restricted Heights 1105 Sq Ft - 102.66 Sq M

For Illustration Purposes Only - Not To Scale Floor Plan by [www.nogaphotostudio.com](http://www.nogaphotostudio.com) Ref: No.46976

This floor plan should be used as a general outline for guidance only. Any intending purchaser or lessee should satisfy themselves by inspection, searches, enquiries and full survey as to the correctness of each statement. Any areas, measurements or distances quoted are approximate and should not be used to value a property or be the basis of any sale or let.

The particulars do not constitute part of an offer or contract. The particulars, including text, photographs and plans, are for the guidance only of prospective purchasers/tenants and must not be relied upon as statements of fact. The descriptions provided therein represent the opinion of the author and whilst given in good faith should not be construed as statements of fact. Nothing in these particulars shall be deemed a statement that the property is in good condition or otherwise or that any services or facilities are in good working order. All measurements are approximate