



Haverstock Hill NW3

Parkheath  
*Sold on Service*





# Haverstock Hill, NW3

## Asking Price

### £949,000, Leasehold

#### Camden Band F

- Fantastic, spacious 3 double bedroom, 2 bathroom apartment
- Extremely bright 28ft dual aspect reception with fireplace
- Stunning 20ft kitchen/diner with central island
- Wood flooring and double glazing
- Over 1100 sq ft approx with a lift on the 2nd floor
- 3 spacious bedrooms plus bathroom and shower room .
- Traditional purpose built block
- 215 years from 1977 (169 years remaining)
- Set in the heart of Belsize Park, moments from shopping, restaurants and transport connections
- Moments from shopping, restaurants and transport connections

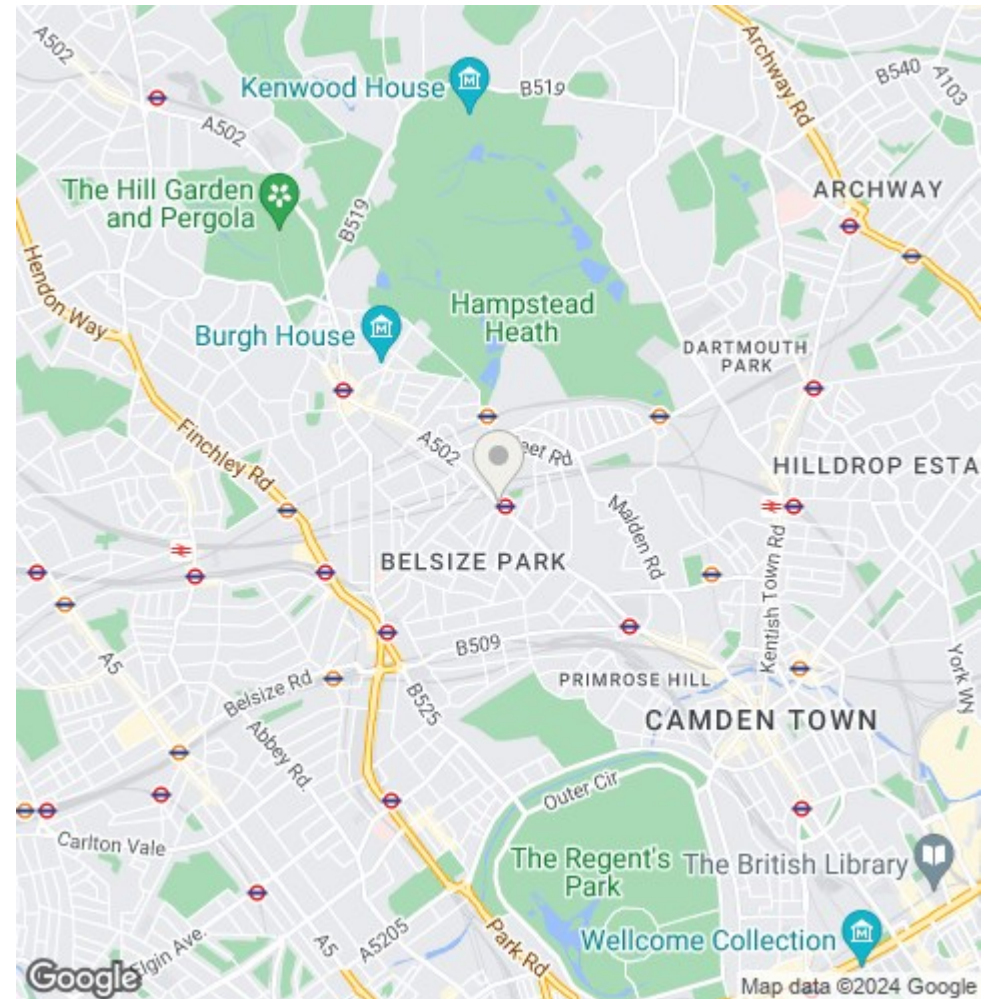
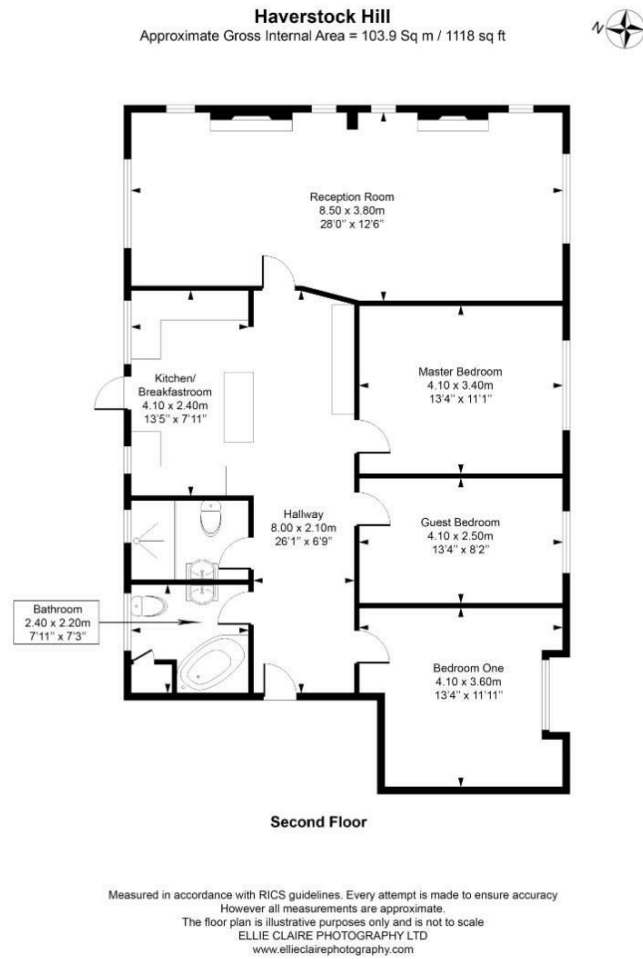
Belsize Park/Hampstead  
 208 Haverstock Hill  
 NW3 2AG  
 Sales 020 7431 1234  
 Lettings 020 7431 3104  
[nw3@parkheath.com](mailto:nw3@parkheath.com)

South/West Hampstead  
 192 West End Lane  
 NW6 1SG  
 Sales & Lettings  
 Tel 020 7794 7111  
[192@parkheath.com](mailto:192@parkheath.com)

Kensal Rise  
 54-56 Chamberlayne Rd  
 NW10 3JH  
 Tel 020 8960 4845  
[kensal@parkheath.com](mailto:kensal@parkheath.com)

Property Management  
 192 West End Lane  
 NW6 1SG  
 020 7433 6174  
[pm@parkheath.com](mailto:pm@parkheath.com)

[www.parkheath.com](http://www.parkheath.com)



The particulars do not constitute part of an offer or contract. The particulars, including text, photographs and plans, are for the guidance only of prospective purchasers/tenants and must not be relied upon as statements of fact. The descriptions provided therein represent the opinion of the author and whilst given in good faith should not be construed as statements of fact. Nothing in these particulars shall be deemed a statement that the property is in good condition or otherwise or that any services or facilities are in good working order. All measurements are approximate