

Parkheath

Sold on Service

Daleham Mews NW3
£3,142 PCM (£725 per week) - Camden Band F



Charming 2 bedroom mews house
Spacious L-shaped reception room
Master bedroom with en suite shower room
3 piece family bathroom
Close proximity to Swiss Cottage tube

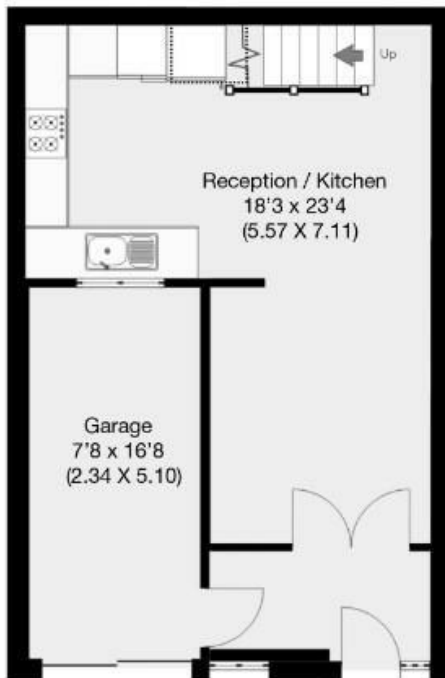
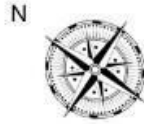
Neutral decor and wood floors throughout
Open plan modern kitchen
Second double bedroom
Picturesque cobbled mews in Belsize Village
EPC: Rating C, Council Tax: Camden band F

Belsize Park Office 020 7431 3104

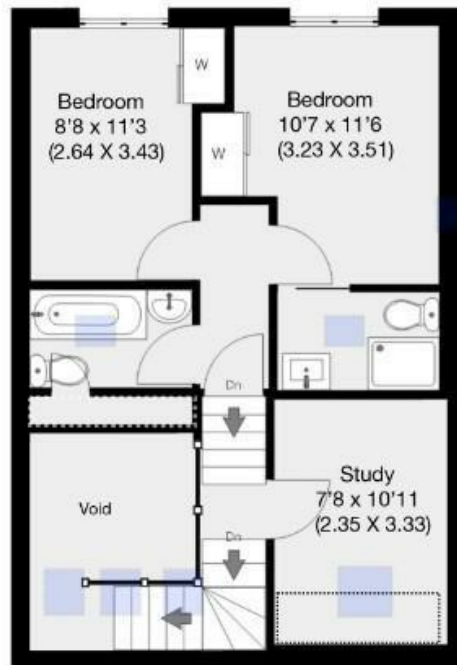


Daleham Mews, London, NW3

Approximate Gross Internal Area 91.1 sqm / 980.5 sqft



Ground Floor



Denotes Restricted Head Height

First Floor

THIS FLOOR PLAN IS PRODUCED FOR PARKHEATH SUBMITTED BY ARCHIMEDIA web: www.archi-media.co.uk

Whilst every attempt has been made to ensure the accuracy of the floor plan contained here, measurements of doors, windows and rooms are approximate and no responsibility is taken for any error, omission or misstatement. These plans are for representation purposes only and should be used as such by any prospective buyer or lease. Specifically no guarantee is given on the gross internal floor area of the property if quoted on this plan and any figures given is initial guidance only and should be treated as such.

The particulars do not constitute part of an offer or contract. The particulars, including text, photographs and plans, are for the guidance only of prospective purchasers/tenants and must not be relied upon as statements of fact. The descriptions provided therein represent the opinion of the author and whilst given in good faith should not be construed as statements of fact. Nothing in these particulars shall be deemed a statement that the property is in good condition or otherwise or that any services or facilities are in good working order. All measurements are approximate