

# Parkheath

*Sold on Service*

**Eton Avenue NW3**

**£3,033 PCM (£700 per week) - Camden Band F**



Characterful 2 double bedroom maisonette

Reception with open plan kitchen

Premier tree-lined road

Moments to Swiss Cottage tube

2 roof terraces and communal garden

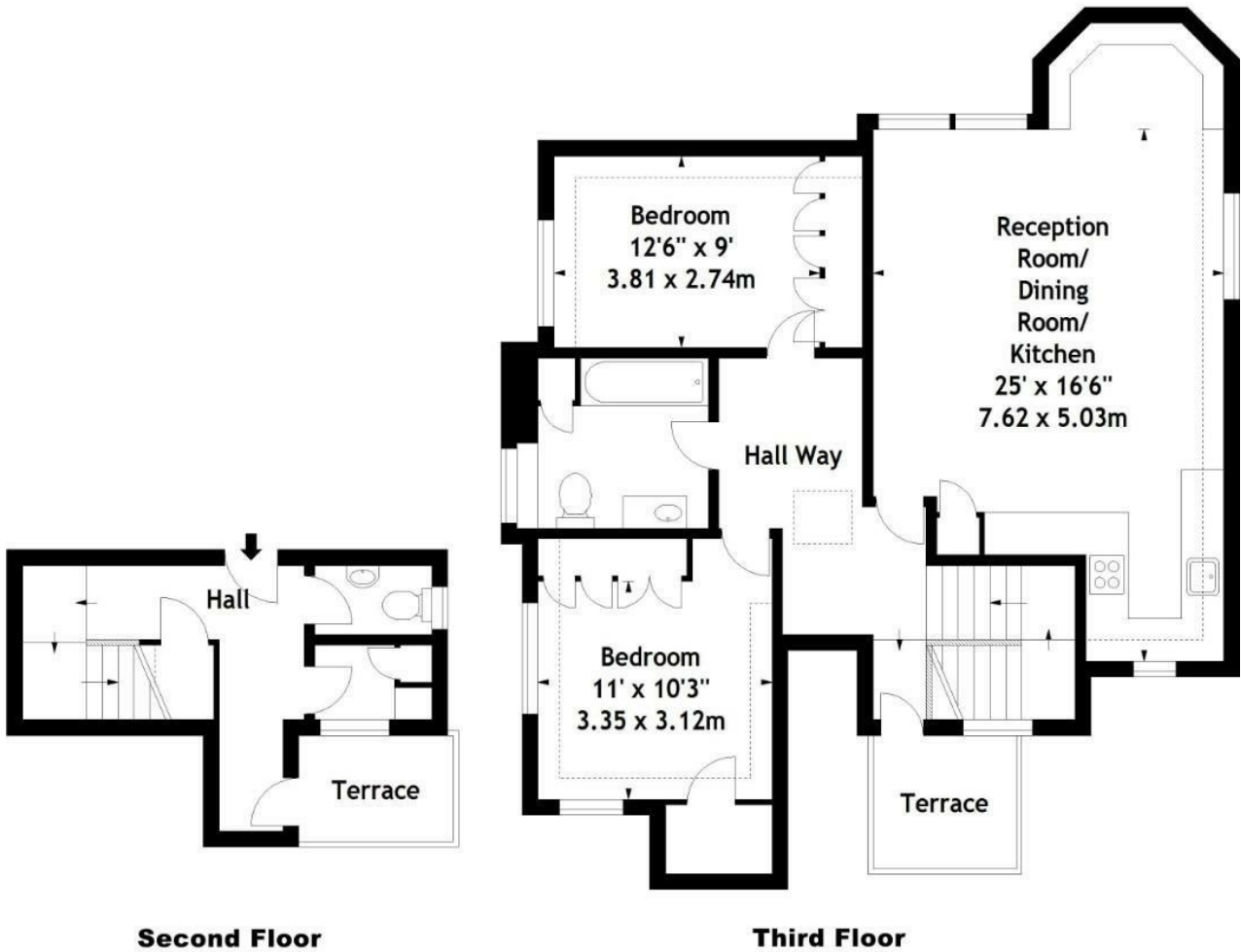
Luxurious 3 piece bathroom & guest WC

2nd & 3rd floors in period house

Close to Primrose Hill and Belsize Parks amenities

Belsize Park Office 020 7431 3104

Eton Avenue, NW3  
Approx. Gross Internal Area  
1085 Sq Ft - 100.80 Sq M



Measured in accordance with RICS guidelines. Every attempt is made to ensure accuracy, however all measurements are approximate. This floor plan is for illustrative purposes only and is not to scale.

© Datography Ltd 2014  
Photographs \* Floorplans \* Virtual Tours  
Tel: 0845 643 4401 www.datography.com

The particulars do not constitute part of an offer or contract. The particulars, including text, photographs and plans, are for the guidance only of prospective purchasers/tenants and must not be relied upon as statements of fact. The descriptions provided therein represent the opinion of the author and whilst given in good faith should not be construed as statements of fact. Nothing in these particulars shall be deemed a statement that the property is in good condition or otherwise or that any services or facilities are in good working order. All measurements are approximate