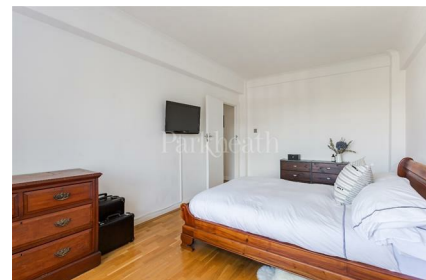
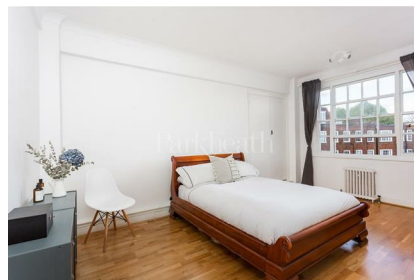


Parkheath

Sold on Service

**Eton College Road NW3
£2,200 PCM (£508 per week) - Camden Band C**

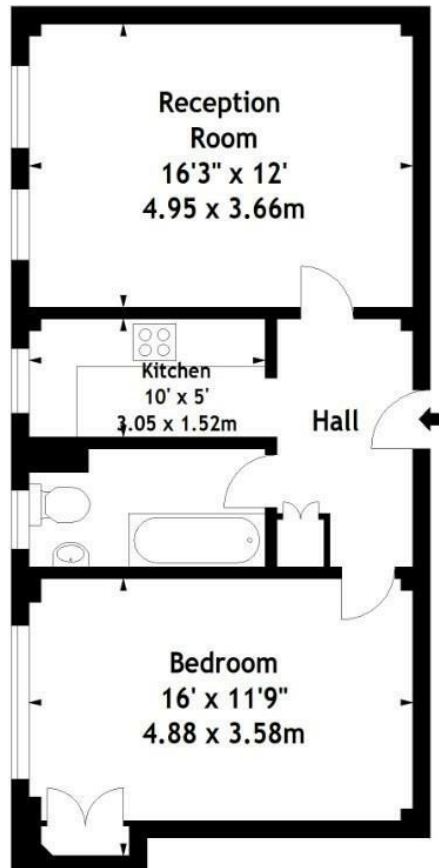
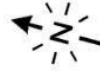


Delightful one bedroom apartment
Lifts, portorage and communal garden
Bright reception with great views
Double bedroom with built-in wardrobes
Moments to Chalk Farm tube

5th floor of mansion block
Communal heating and hot water
modern kitchen with all appliances
Wood floors throughout
EPC: Rating D, Council Tax: Camden band C

Belsize Park Office 020 7431 3104

Eton College Road,
Eton Hall, NW3
Approx. Gross Internal Area
553 Sq Ft - 51.37 Sq M



Fifth Floor

Measured in accordance with RICS guidelines. Every attempt is made to ensure accuracy, however all measurements are approximate.

This floor plan is for illustrative purposes only and is not to scale.

© Datography Ltd 2016

Photographs * Floorplans * Virtual Tours

Tel: 0845 643 4401 www.datography.com

The particulars do not constitute part of an offer or contract. The particulars, including text, photographs and plans, are for the guidance only of prospective purchasers/tenants and must not be relied upon as statements of fact. The descriptions provided therein represent the opinion of the author and whilst given in good faith should not be construed as statements of fact. Nothing in these particulars shall be deemed a statement that the property is in good condition or otherwise or that any services or facilities are in good working order. All measurements are approximate