

Parkheath

Sold on Service

Antrim Road NW3
£3,575 PCM - Camden Band F

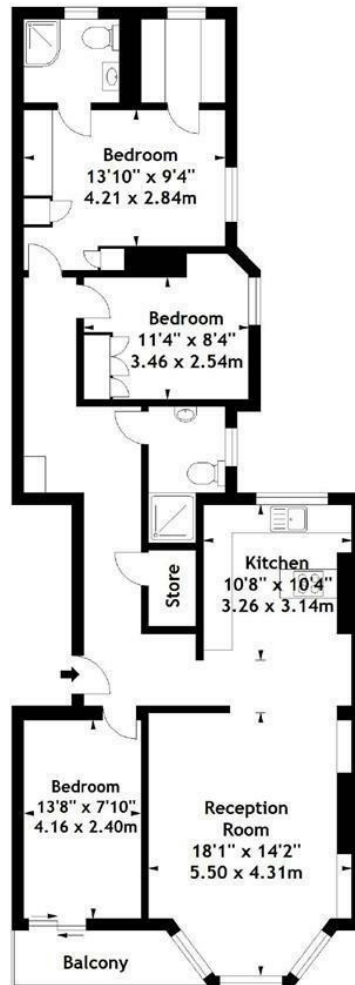


Incredibly stylish 1st floor apartment
Large reception with high ceilings
Master bedroom with en suite shower room
3rd bedroom
Moments to England's Lanes' cafés

Mansion block with communal gardens
Open plan contemporary white gloss kitchen
2nd bedroom with access to balcony
Shower room and utility room
Close to Belsize Park tube

Belsize Park Office 020 7431 3104

Antrim Road,
Antrim Mansions, NW3
Approx. Gross Internal Area
1079 Sq Ft - 100.24 Sq M



First Floor

Measured in accordance with RICS guidelines. Every attempt is made to ensure accuracy, however all measurements are approximate. This floor plan is for illustrative purposes only and is not to scale.
© Datagraphy Ltd 2014
Photographs * Floorplans * Virtual Tours
Tel: 0845 643 4401 www.datagraphy.com

The particulars do not constitute part of an offer or contract. The particulars, including text, photographs and plans, are for the guidance only of prospective purchasers/tenants and must not be relied upon as statements of fact. The descriptions provided therein represent the opinion of the author and whilst given in good faith should not be construed as statements of fact. Nothing in these particulars shall be deemed a statement that the property is in good condition or otherwise or that any services or facilities are in good working order. All measurements are approximate