

Parkheath

Sold on Service

Belsize Avenue NW3
£3,000 PCM (£692 per week) - Camden Band F

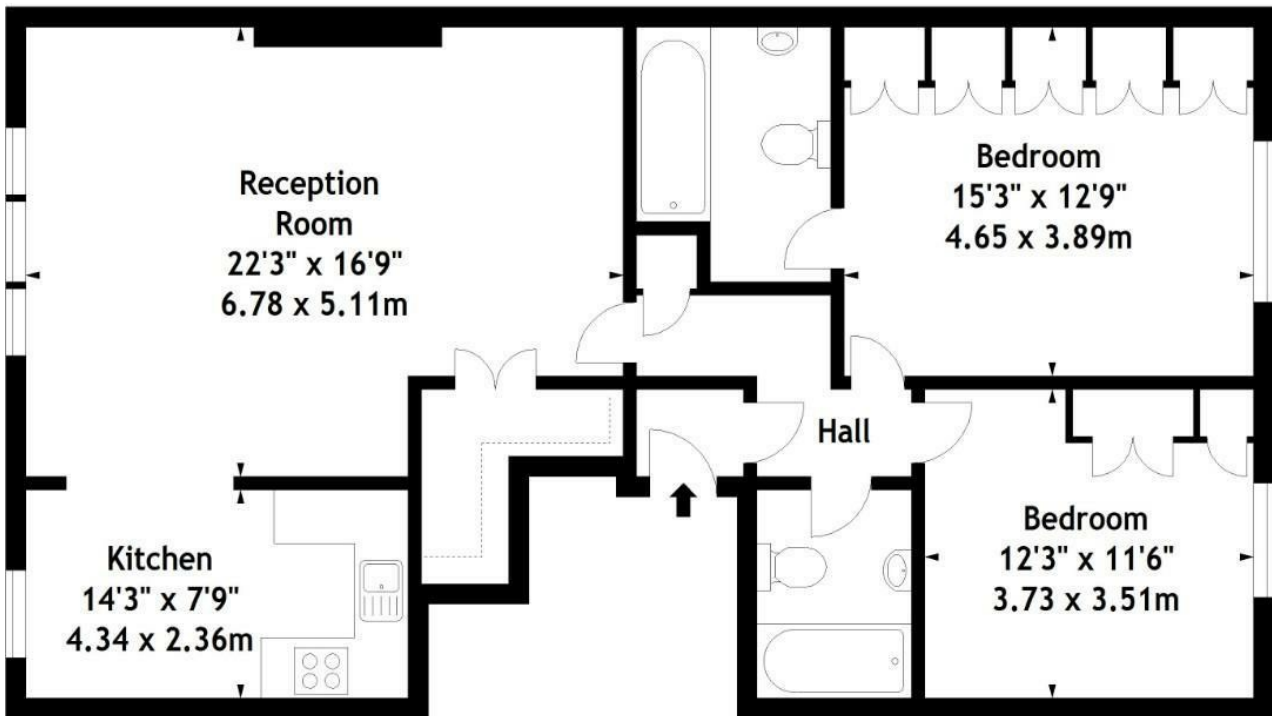
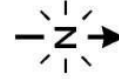


Incredibly spacious 2 double bedroom apartment
Huge south facing wood floor reception
Master bedroom with ensuite bathroom
Moments to Belsize Villages shops and cafes

Entire 2nd floor of a period property
Modern kitchen/diner with all appliances
Fully tiled family bathroom
Located minutes from Belsize Park tube

Belsize Park Office 020 7431 3104

Belsize Avenue, NW3
Approx. Gross Internal Area
1048 Sq Ft - 97.36 Sq M



Second Floor

Measured in accordance with RICS guidelines. Every attempt is made to ensure accuracy, however all measurements are approximate.

This floor plan is for illustrative purposes only and is not to scale.

© Datography Ltd 2015

Photographs * Floorplans * Virtual Tours

Tel: 0845 643 4401 www.datography.com

The particulars do not constitute part of an offer or contract. The particulars, including text, photographs and plans, are for the guidance only of prospective purchasers/tenants and must not be relied upon as statements of fact. The descriptions provided therein represent the opinion of the author and whilst given in good faith should not be construed as statements of fact. Nothing in these particulars shall be deemed a statement that the property is in good condition or otherwise or that any services or facilities are in good working order. All measurements are approximate