

# Parkheath

*Sold on Service*

---

## **Antrim Mansions NW3** **£5,500 PCM (£1269 per week) - Camden Band F**

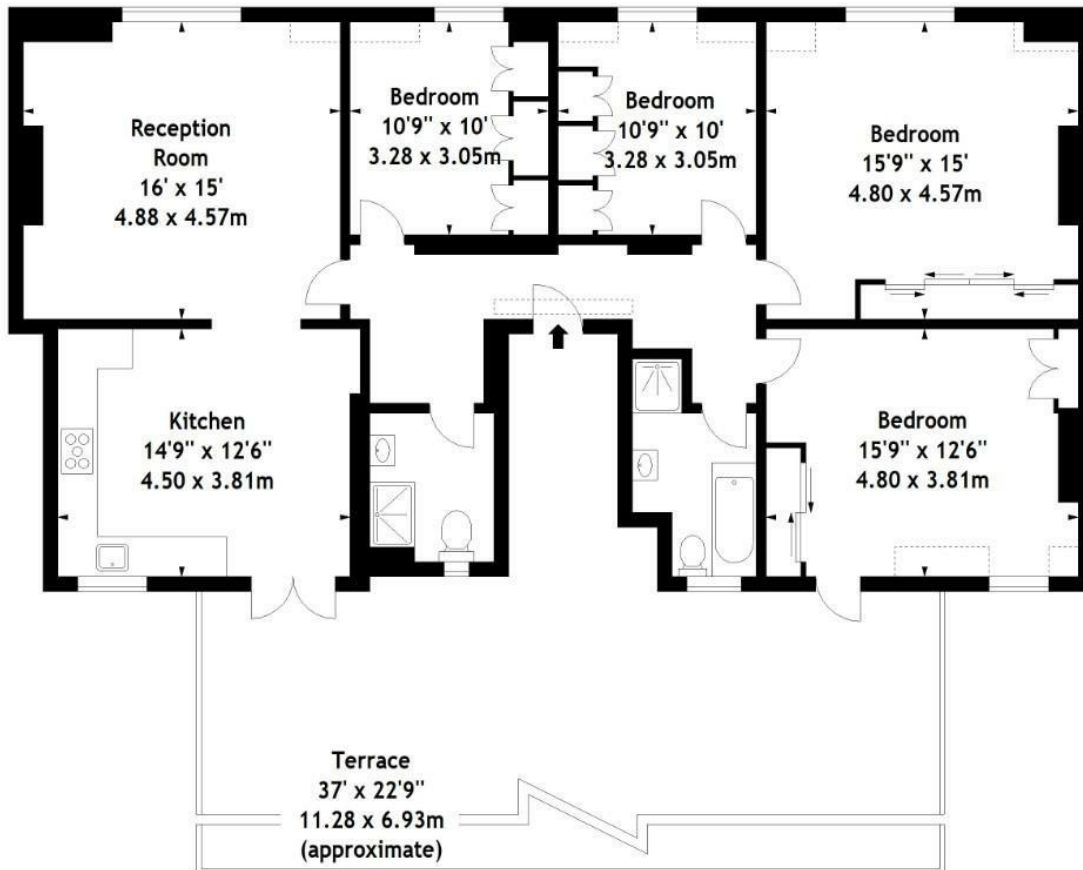


Stunning 4 bedroom penthouse apartment  
Top (3rd) floor in period mansion block  
Reception with feature fireplace  
Moments to England's Lane shops and cafes

37' private double roof terrace  
Contemporary décor with wood floors  
Superb kitchen diner with all appliances  
Very close to Belsize Park tube

Belsize Park Office 020 7431 3104

Antrim Mansions,  
Antrim Road, NW3  
Approx. Gross Internal Area  
1356 Sq Ft - 125.97 Sq M



Third Floor

Measured in accordance with RICS guidelines. Every attempt is made to ensure accuracy, however all measurements are approximate. This floor plan is for illustrative purposes only and is not to scale.  
© Datography Ltd 2015  
Photographs \* Floorplans \* Virtual Tours  
Tel: 0845 643 4401 www.datography.com

The particulars do not constitute part of an offer or contract. The particulars, including text, photographs and plans, are for the guidance only of prospective purchasers/tenants and must not be relied upon as statements of fact. The descriptions provided therein represent the opinion of the author and whilst given in good faith should not be construed as statements of fact. Nothing in these particulars shall be deemed a statement that the property is in good condition or otherwise or that any services or facilities are in good working order. All measurements are approximate