

Parkheath

Sold on Service

Eton Avenue NW3
£4,600 PCM (£1062 per week) - Camden Band G



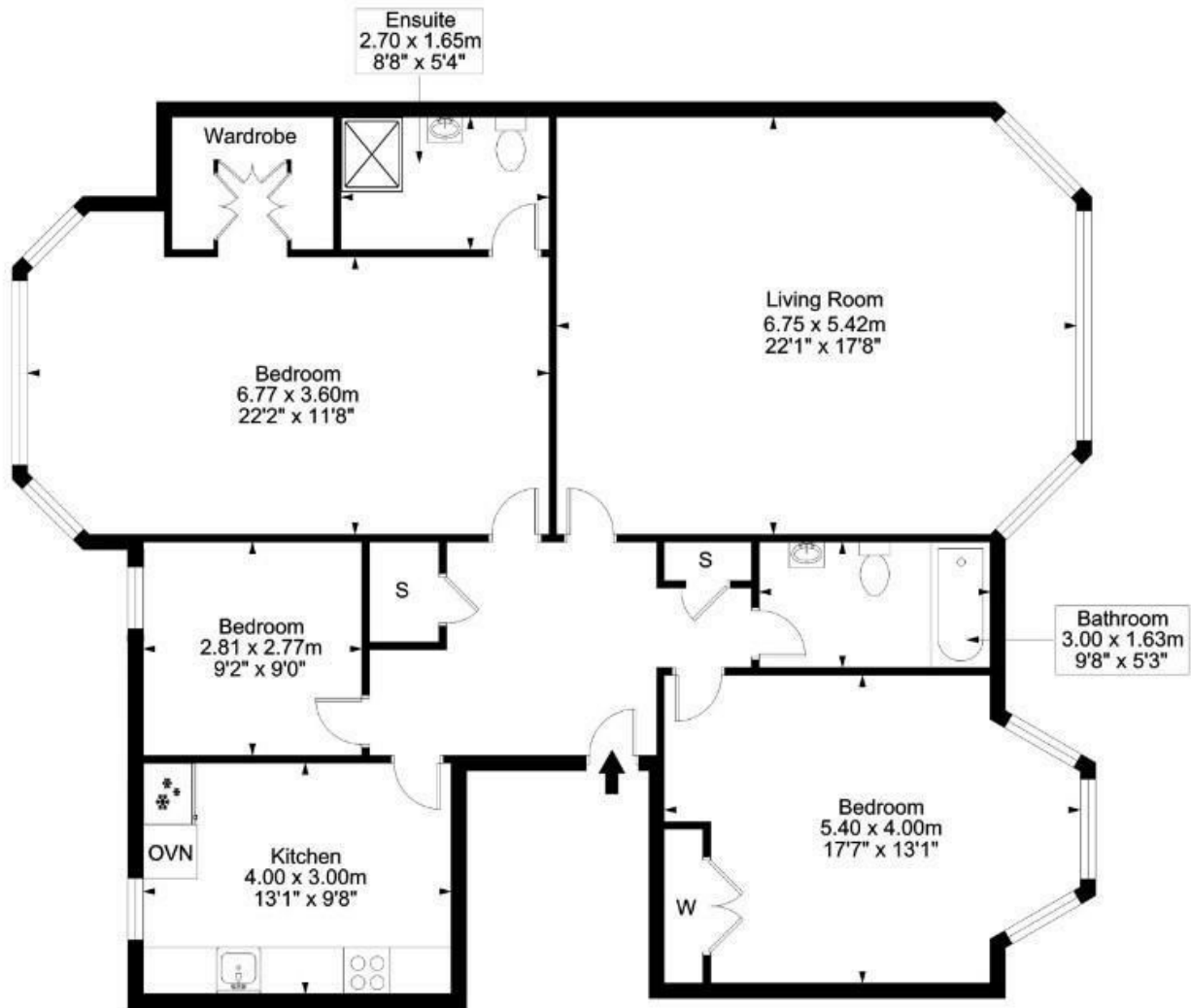
Sensational 3 bedroom 1st floor apartment
Period house with communal garden
Double reception with garden views
Main bedroom with ensuite shower room
Near to Belsize Park and Primrose Hill

1366 sq ft of lateral accommodation
Wood floors and neutral décor
Kitchen diner with all appliances
Close proximity to Swiss Cottage tube
EPC: Rating C, Council Tax: Camden band G

Belsize Park Office 020 7431 3104

Eton Avenue

Approximate Gross Internal Floor Area= 126.94 SQ M / 1366.37 SQ FT



First Floor

This plan is for layout guidance only. Drawn in accordance with RICS guidelines. Not drawn to scale unless stated. Windows & door openings are approximate. Whilst every care is taken in the preparation of this plan, please check all dimensions, shapes & compass bearings before marking any decisions reliant upon them.

ELLIE CLAIRE PHOTOGRAPHY LTD
www.ellieclairephotography.com

The particulars do not constitute part of an offer or contract. The particulars, including text, photographs and plans, are for the guidance only of prospective purchasers/tenants and must not be relied upon as statements of fact. The descriptions provided therein represent the opinion of the author and whilst given in good faith should not be construed as statements of fact. Nothing in these particulars shall be deemed a statement that the property is in good condition or otherwise or that any services or facilities are in good working order. All measurements are approximate