

# Parkheath

*Sold on Service*

**Adamson Road NW3**

**£3,250 PCM (£750 per week) - Camden Band F**

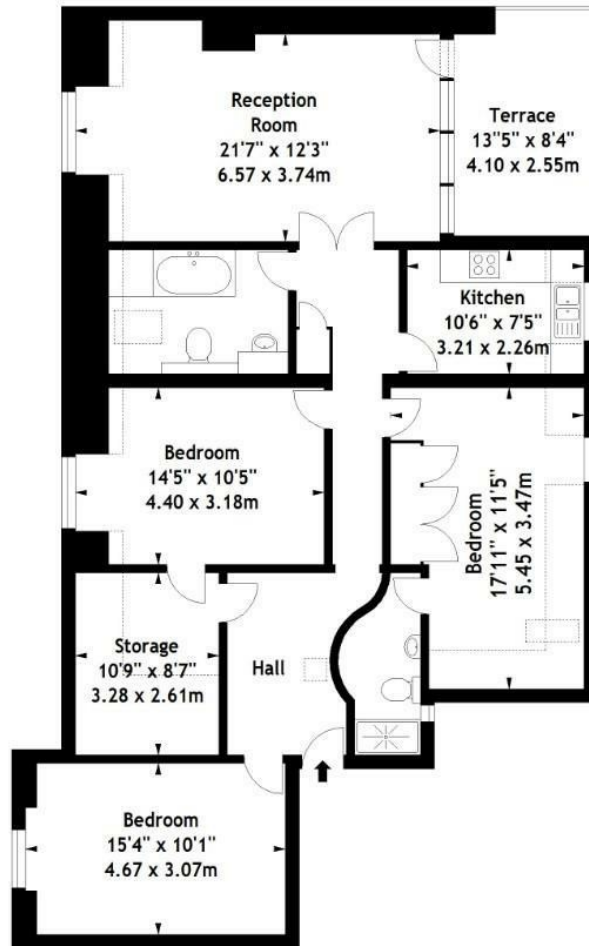


Wonderfully spacious 3 bedroom apartment  
Top ( 3rd) floor in imposing period conversion  
Modern fully fitted kitchen  
3 double bedrooms  
Suitable for 3 professional sharers or a family

13' private roof terrace  
Reception with doors to terrace  
Master bedroom with en suite shower  
Moments to Swiss Cottage tube  
EPC: Rating D, Council Tax: Camden band F

Belsize Park Office 020 7431 3104

Adamson Road, NW3  
Approx. Gross Internal Area  
1266 Sq Ft - 117.61 Sq M



Third Floor

Measured in accordance with RICS guidelines. Every attempt is made to ensure accuracy, however all measurements are approximate. This floor plan is for illustrative purposes only and is not to scale.  
© Datography Ltd 2014  
Photographs \* Floorplans \* Virtual Tours  
Tel: 0845 643 4401 www.datography.com

The particulars do not constitute part of an offer or contract. The particulars, including text, photographs and plans, are for the guidance only of prospective purchasers/tenants and must not be relied upon as statements of fact. The descriptions provided therein represent the opinion of the author and whilst given in good faith should not be construed as statements of fact. Nothing in these particulars shall be deemed a statement that the property is in good condition or otherwise or that any services or facilities are in good working order. All measurements are approximate