

Parkheath

Sold on Service

Kidderpore Avenue NW3
£4,000 PCM (£923 per week) - Camden Band G

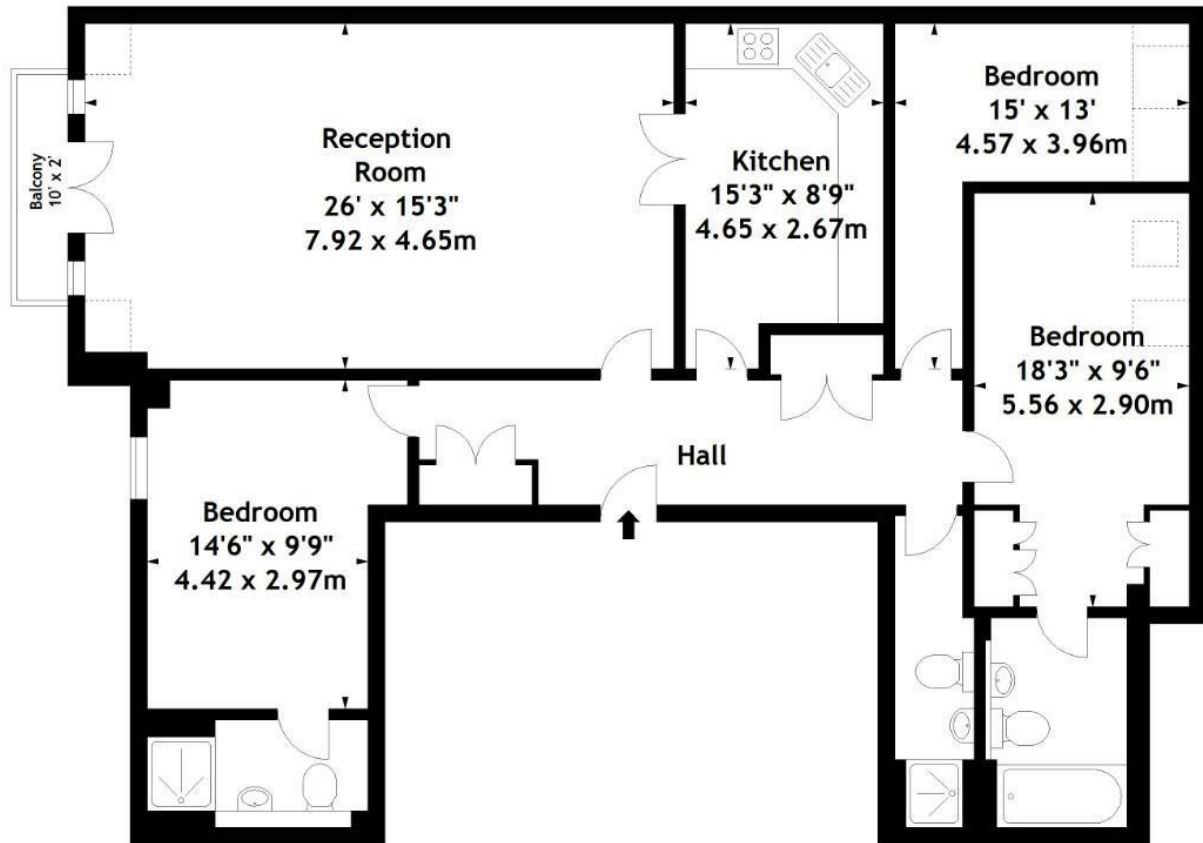


Outstanding 3 bedroom apartment
Exclusive portered development
Spacious reception room
2 bedrooms with en suite bathrooms
Moments to Finchley Road amenities

Private balcony, communal gardens and parking
Leisure complex with swimming pool and gym
Modern kitchen with all appliances
Large kitchen diner
Walking distance to Hampstead Village

Belsize Park Office 020 7431 3104

Cedar House,
Kidderpore Avenue, NW3
Approx. Gross Internal Area
1310 Sq Ft - 121.70 Sq M



Fourth Floor

Measured in accordance with RICS guidelines. Every attempt is made to ensure accuracy, however all measurements are approximate. This floor plan is for illustrative purposes only and is not to scale.

© Datography Ltd 2015

Photographs * Floorplans * Virtual Tours
Tel: 0845 643 4401 www.datography.com

The particulars do not constitute part of an offer or contract. The particulars, including text, photographs and plans, are for the guidance only of prospective purchasers/tenants and must not be relied upon as statements of fact. The descriptions provided therein represent the opinion of the author and whilst given in good faith should not be construed as statements of fact. Nothing in these particulars shall be deemed a statement that the property is in good condition or otherwise or that any services or facilities are in good working order. All measurements are approximate