

Parkheath

Sold on Service

Parkhill Road NW3
£3,000 PCM (£692 per week) - Camden Band F

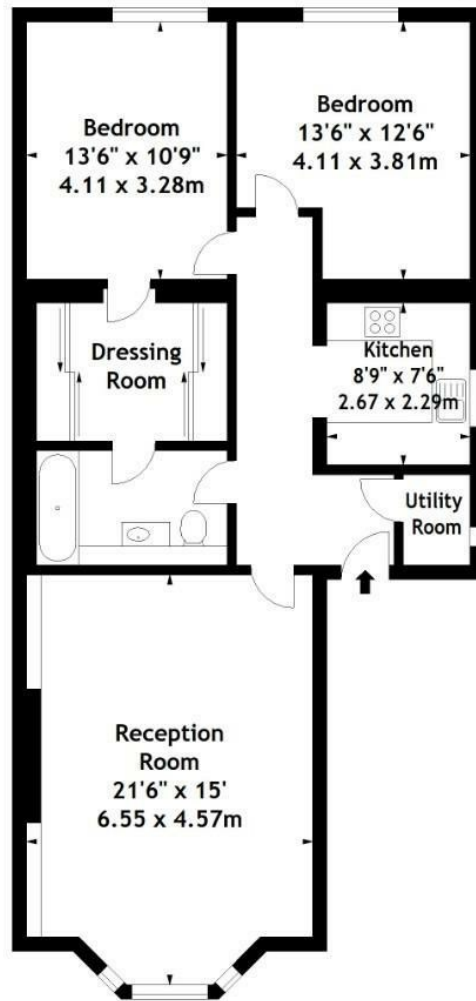


Beautiful raised ground floor apartment
Period conversion
Contemporary kitchen with all appliances
2nd double bedroom
Very close to Belsize Park tube

Spacious rooms with high ceilings
Reception with bay window
Master bedroom with walk-in wardrobe
Luxury bathroom
Walking distance to Hampstead Heath

Belsize Park Office 020 7431 3104

Parkhill Road, NW3
Approx. Gross Internal Area
1014 Sq Ft - 94.2 Sq M



Raised Ground Floor

This plan is for layout guidance only. Not drawn to scale unless stated.
Windows & door openings are approximate. Whilst every care is taken in the preparation of
this plan, please check all dimensions, shapes & compass bearings before making any
decisions reliant upon them. © Datography 2015

The particulars do not constitute part of an offer or contract. The particulars, including text, photographs and plans, are for the guidance only of prospective purchasers/tenants and must not be relied upon as statements of fact. The descriptions provided therein represent the opinion of the author and whilst given in good faith should not be construed as statements of fact. Nothing in these particulars shall be deemed a statement that the property is in good condition or otherwise or that any services or facilities are in good working order. All measurements are approximate