

# Parkheath

*Sold on Service*

---

**Gloucester Avenue NW1**  
**£3,141 PCM (£725 per week) - Camden Band F**

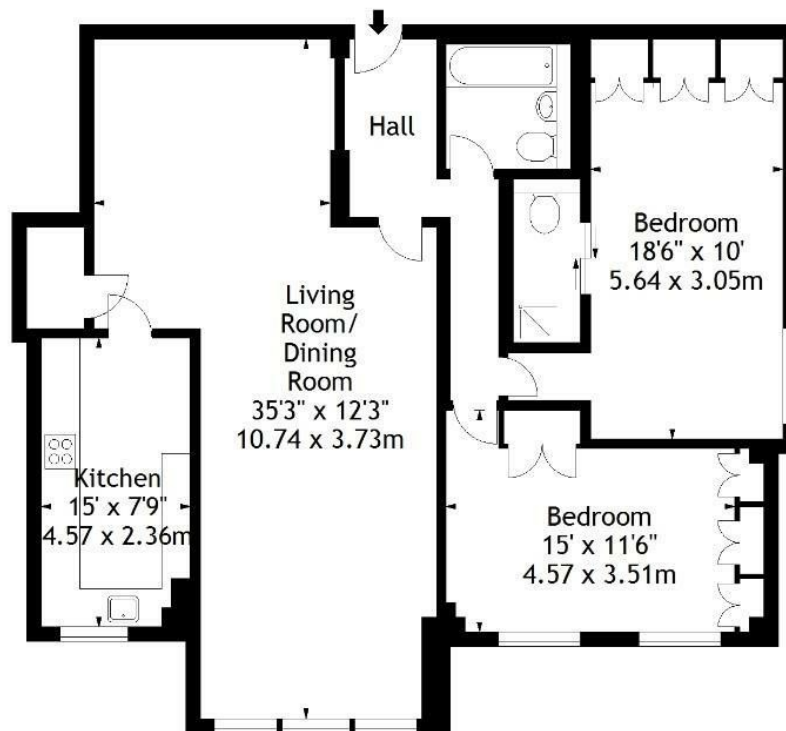


Communal garden, lift and garage  
Spacious and well proportioned  
Kitchen diner with all appliances  
Moments to Regents Park and Primrose Hill park

4th floor in prestigious purpose built block  
Double reception room  
Master bedroom with ensuite  
Close to Primrose Hill Village and Camden

Belsize Park Office 020 7431 3104

Darwin Court,  
Gloucester Avenue, NW1  
Approx. Gross Internal Area  
1201 Sq Ft - 111.57 Sq M



#### Fourth Floor

Measured in accordance with RICS guidelines. Every attempt is made to ensure accuracy, however all measurements are approximate. This floor plan is for illustrative purposes only and is not to scale.

© Datagraphy Ltd 2016  
Photographs \* Floorplans \* Virtual Tours  
Tel: 0845 643 4401 [www.datagraphy.com](http://www.datagraphy.com)

The particulars do not constitute part of an offer or contract. The particulars, including text, photographs and plans, are for the guidance only of prospective purchasers/tenants and must not be relied upon as statements of fact. The descriptions provided therein represent the opinion of the author and whilst given in good faith should not be construed as statements of fact. Nothing in these particulars shall be deemed a statement that the property is in good condition or otherwise or that any services or facilities are in good working order. All measurements are approximate