

# Parkheath

*Sold on Service*

**Eton Avenue NW3**  
**£3,900 PCM (£900 per week) - Camden Band F**



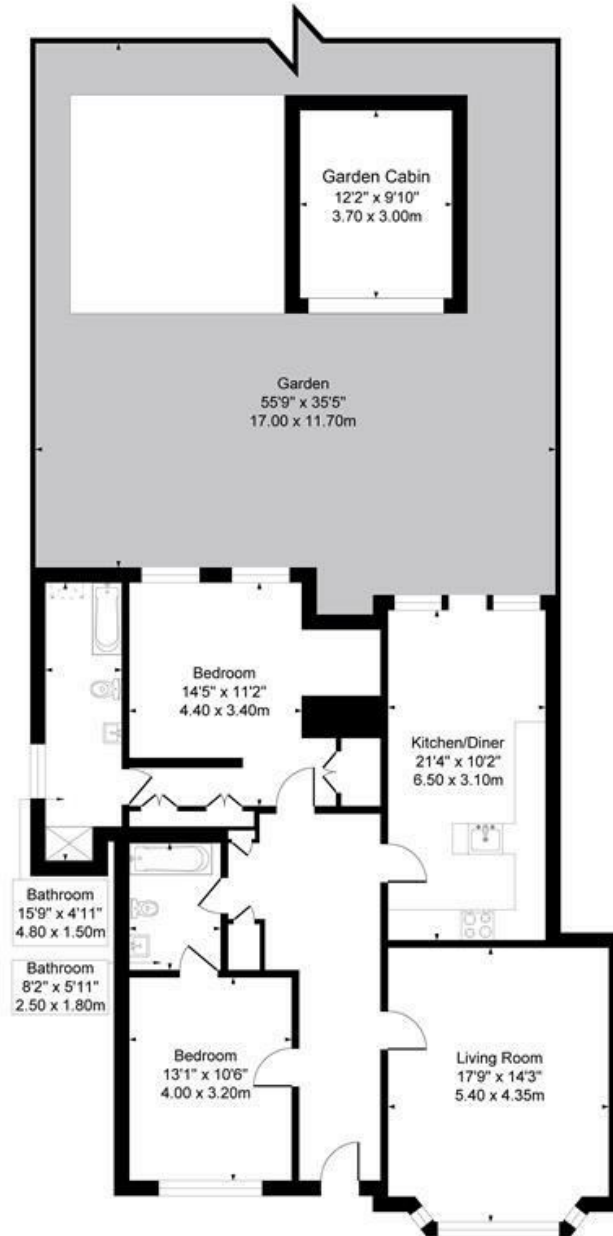
Delightful ground floor apartment  
Grand period house  
Wonderful kitchen diner  
Period features  
Walking distance to Primrose Hill

Shared garden and off street parking  
Imposing formal reception  
Lavish master bedroom suite  
Close to Belsize Park and Swiss Cottage tubes  
Garden cabin/storage

Belsize Park Office 020 7431 3104

# Eton Avenue

Approximate Gross Internal Area = 110 sq m / 1189 sq ft



## Ground Floor

Measured in accordance with RICS guidelines. Every attempt is made to ensure accuracy  
However all measurements are approximate.  
The Floor plan is illustrative purposes Only and is not to scale  
ELLIE CLAIRE PHOTOGRAPHY LTD

The particulars do not constitute part of an offer or contract. The particulars, including text, photographs and plans, are for the guidance only of prospective purchasers/tenants and must not be relied upon as statements of fact. The descriptions provided therein represent the opinion of the author and whilst given in good faith should not be construed as statements of fact. Nothing in these particulars shall be deemed a statement that the property is in good condition or otherwise or that any services or facilities are in good working order. All measurements are approximate