

Parkheath

Sold on Service

Glenmore Road NW3

£3,100 PCM (£715 per week) - Camden Band F



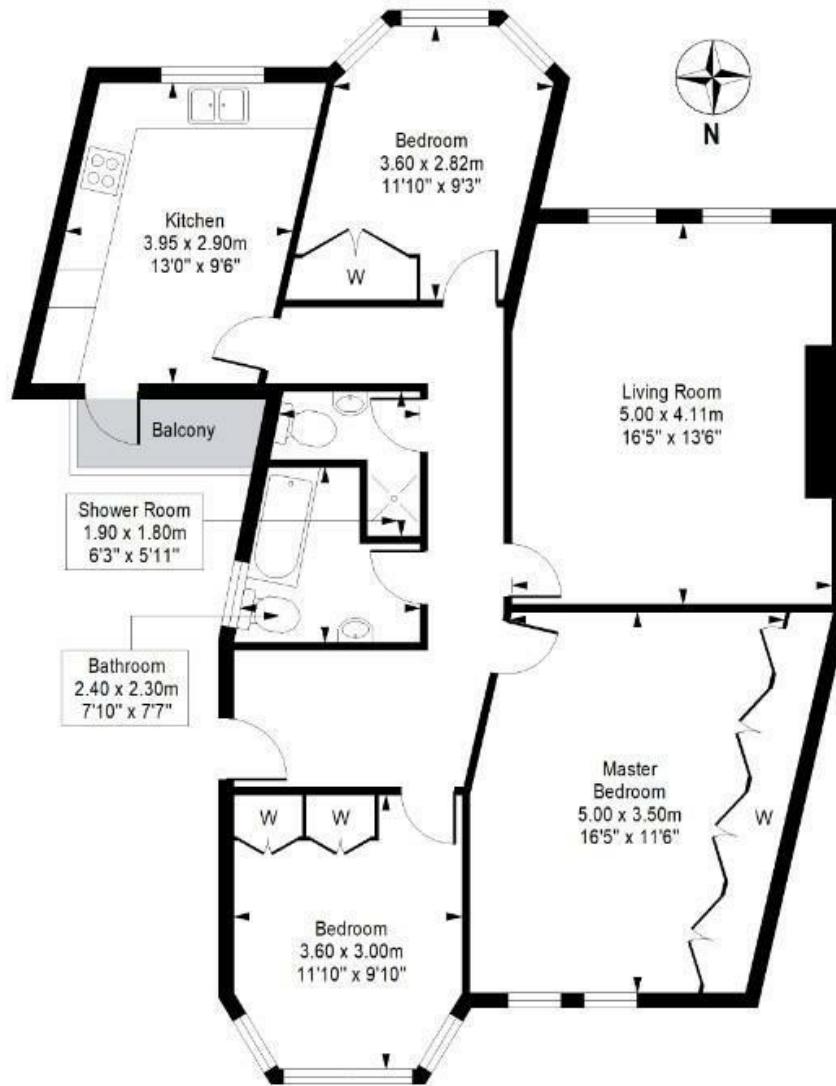
Spacious 3 double bedroom apartment
Good size wood floor reception
Smart 3 piece bathroom
Located moments to Belsize Park tube

2nd floor in purpose built block
Kitchen diner with all appliances
Separate shower room
Close to shops and cafes

Belsize Park Office 020 7431 1234

Glenmore Road

Approximate Gross Internal Area = 95.4 Sq m / 1027 Sq ft



Third Floor

This plan is for layout guidance only. Drawn in accordance with RICS guidelines. Not drawn to scale unless stated. Windows & door openings are approximate. Whilst every care is taken in the preparation of this plan, please check all dimensions, shapes & compass bearings before marking any decisions reliant upon them.

ELLIE CLAIRE PHOTOGRAPHY LTD
www.ellieclairephotography.com

The particulars do not constitute part of an offer or contract. The particulars, including text, photographs and plans, are for the guidance only of prospective purchasers/tenants and must not be relied upon as statements of fact. The descriptions provided therein represent the opinion of the author and whilst given in good faith should not be construed as statements of fact. Nothing in these particulars shall be deemed a statement that the property is in good condition or otherwise or that any services or facilities are in good working order. All measurements are approximate