

# Parkheath

*Sold on Service*

**Belsize Avenue NW3**  
**£1,150,000**



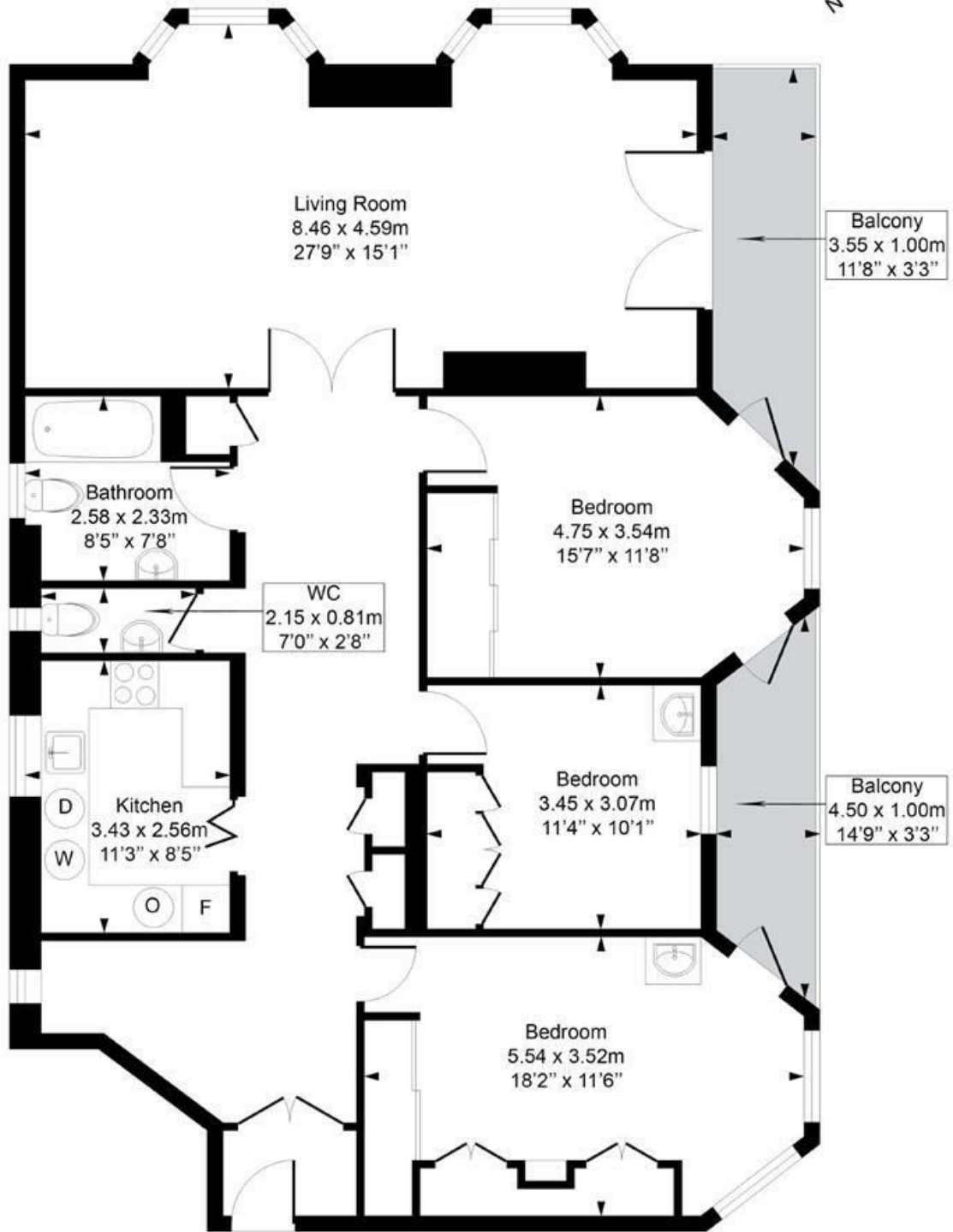
Spacious 3 double bedroom flat  
Stunning views over London  
Approx 1350 sq ft  
2 large balconies  
Share of freehold

Unmodernised apartment  
Set on the top floor (5th)  
Double aspect 27' reception  
Lift, portorage and gardens  
Popular 1930's mansion block

Belsize Park Office 020 7431 3104

## Hillfield Court

Approximate Gross Internal Area = 125.5 Sq m / 1350 sq ft



### Fifth Floor

Measured in accordance with RICS guidelines. Every attempt is made to ensure accuracy

However all measurements are approximate.

The floor plan is illustrative purposes only and is not to scale

ELLIE CLAIRE PHOTOGRAPHY LTD

[www.ellieclairephotography.com](http://www.ellieclairephotography.com)

The particulars do not constitute part of an offer or contract. The particulars, including text, photographs and plans, are for the guidance only of prospective purchasers/tenants and must not be relied upon as statements of fact. The descriptions provided therein represent the opinion of the author and whilst given in good faith should not be construed as statements of fact. Nothing in these particulars shall be deemed a statement that the property is in good condition or otherwise or that any services or facilities are in good working order. All measurements are approximate