

Parkheath

Sold on Service

Crossfield Road NW3
Asking Price £1,000,000



3 bedroom upper maisonette
Excellent decorative order
1289 sq ft including eaves
Sleek semi-o/plan kitchen
12' second bedroom

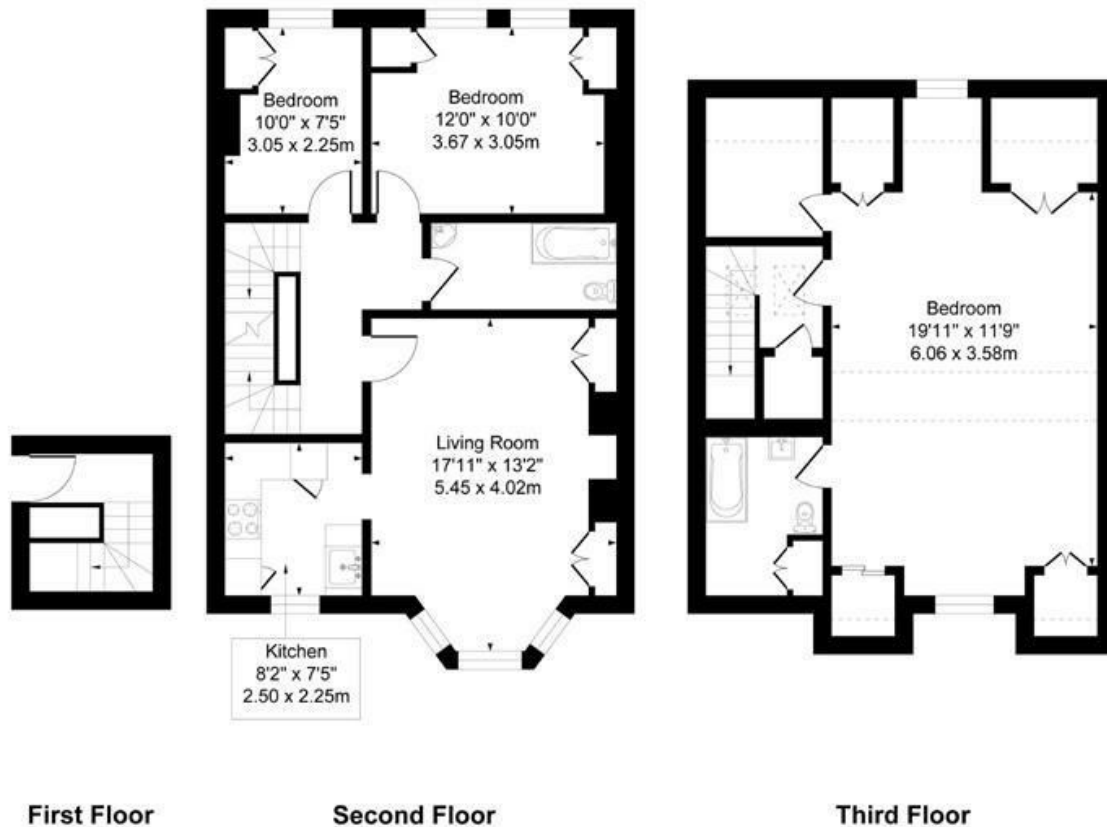
Attractive Victorian residence
Entire 2nd & 3rd (top) floors
Stunning 17' reception
Grand 19' master bedroom
3rd bedroom plus bathroom suite

Belsize Park Office 020 7431 3104

Crossfield Road

Approximate Gross Internal Area including eaves Storage = 120 sq m / 1289 sq f

Approximate Gross Internal Area excluding eaves Storage = 105 sq m / 1134 sq f t



Measured in accordance with RICS guidelines. Every attempt is made to ensure accuracy
However all measurements are approximate.
The Floor plan is illustrative purposes Only and is not to scale
ELLIE CLAIRE PHOTOGRAPHY LTD

The particulars do not constitute part of an offer or contract. The particulars, including text, photographs and plans, are for the guidance only of prospective purchasers/tenants and must not be relied upon as statements of fact. The descriptions provided therein represent the opinion of the author and whilst given in good faith should not be construed as statements of fact. Nothing in these particulars shall be deemed a statement that the property is in good condition or otherwise or that any services or facilities are in good working order. All measurements are approximate