

Parkheath

Sold on Service

Fellows Road NW3
Asking Price £675,000



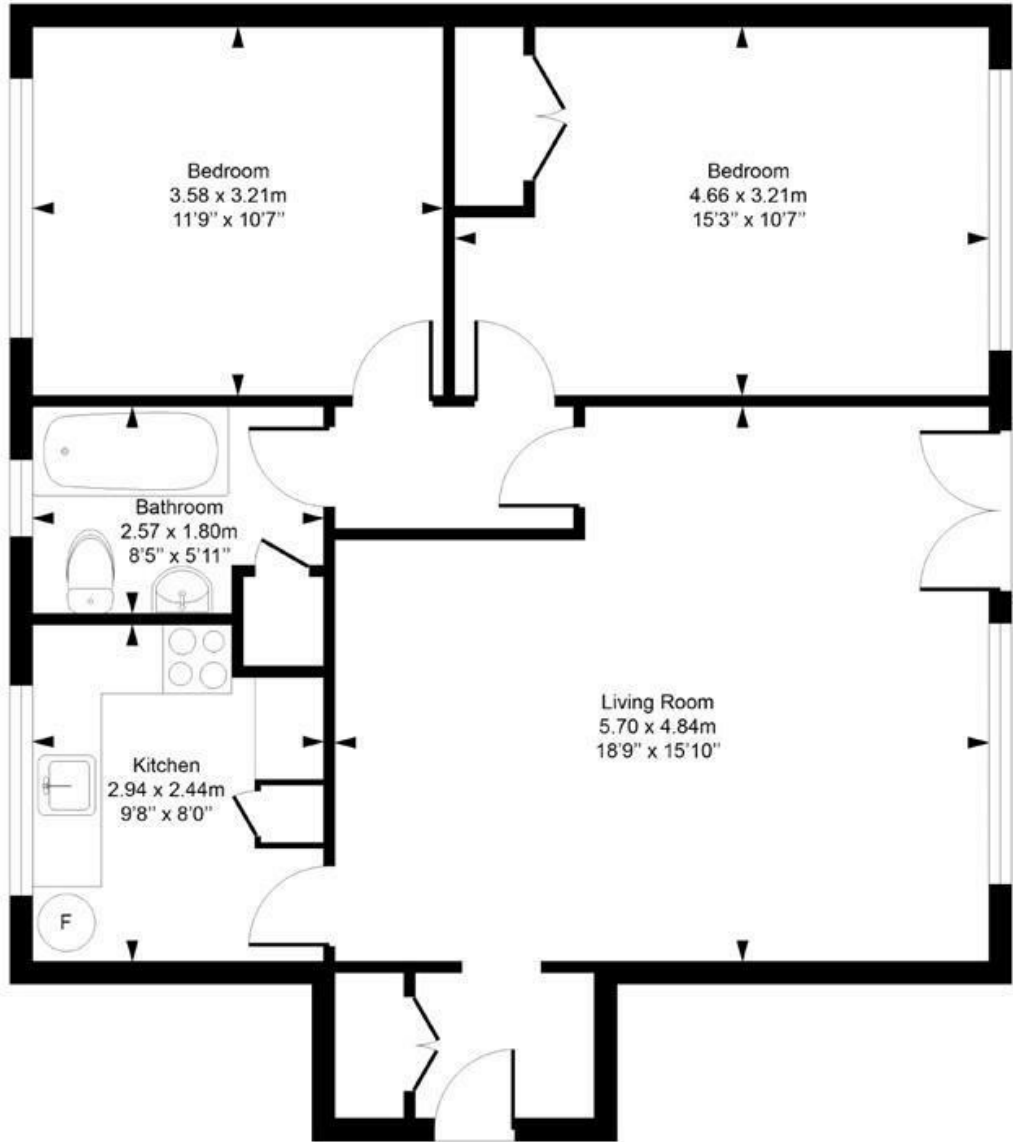
Spacious 2 bed apartment
Lock up garage
First floor served by a lift
18' reception plus 9' kitchen
2 double bedrooms

Popular purpose built block
Over 800 sq ft
Chain free
Communal gardens
999 years from 1958

Belsize Park Office 020 7431 3104

Fellows Road

Approximate Gross Internal Area = 75.1 Sq m / 808 sq ft



First Floor

Measured in accordance with RICS guidelines. Every attempt is made to ensure accuracy

However all measurements are approximate.

The floor plan is illustrative purposes only and is not to scale

ELLIE CLAIRE PHOTOGRAPHY LTD

www.ellieclairephotography.com

The particulars do not constitute part of an offer or contract. The particulars, including text, photographs and plans, are for the guidance only of prospective purchasers/tenants and must not be relied upon as statements of fact. The descriptions provided therein represent the opinion of the author and whilst given in good faith should not be construed as statements of fact. Nothing in these particulars shall be deemed a statement that the property is in good condition or otherwise or that any services or facilities are in good working order. All measurements are approximate