

# Parkheath

*Sold on Service*

**Mapesbury Road NW2**

**£3,500 PCM (£808 per week) - Brent (41B) Band E**



Exceptional ground level apartment

Large reception/dining room with oak wood floors

1151 Sq Ft / 106.9 Sq M

2 further bedrooms and a shower room

0.5 miles to Brondesbury overground service

Rear garden

Stunning open plan kitchen with central island

Master bedroom with walk-in closet and en-suite bathroom

0.3 miles to Kilburn underground (Jubilee line, zone 2)

EPC energy rating D / Council tax: Brent band E

West Hampstead Office 020 7794 7111

# Mapesbury Road



Approximate Gross Internal Area = 106.9 sq m / 1151 sq ft

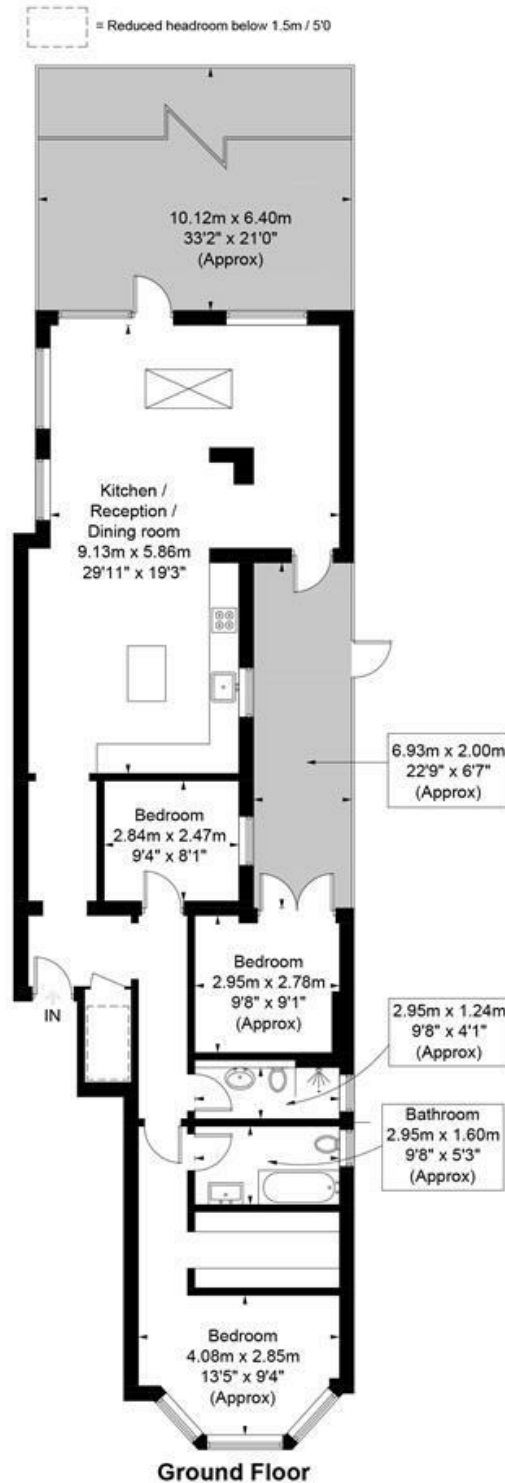


Illustration for identification purposes only, measurements are approximate,  
not to scale. FloorplansUsketch.com © 2019 (ID514739)  
ELLIE CLAIRE PHOTOGRAPHY LTD

The particulars do not constitute part of an offer or contract. The particulars, including text, photographs and plans, are for the guidance only of prospective purchasers/tenants and must not be relied upon as statements of fact. The descriptions provided therein represent the opinion of the author and whilst given in good faith should not be construed as statements of fact. Nothing in these particulars shall be deemed a statement that the property is in good condition or otherwise or that any services or facilities are in good working order. All measurements are approximate