

# Parkheath

*Sold on Service*

**Hillfield Road NW6**

**£2,600 PCM (£600 per week) - Camden Band F**

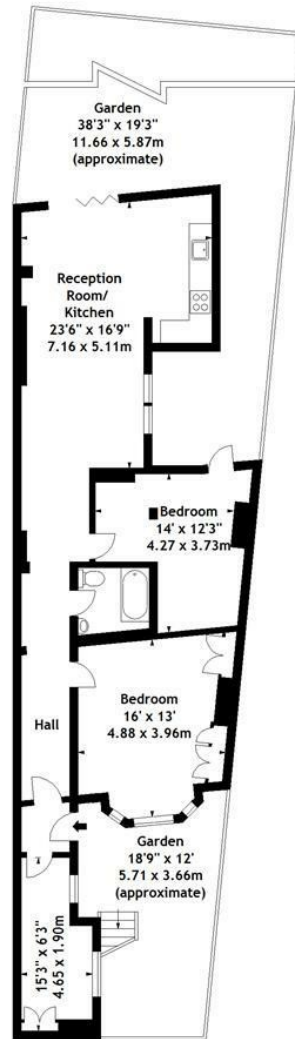


Contemporary 2 bedroom flat  
Lower ground floor with private entrance  
Understairs storage/study area  
Transport and shops of West End Lane close by

Private south facing 38' rear garden  
Stunning reception room/dining room with open plan kitchen  
Bathroom/WC  
EPC energy rating TBC / Council tax: Camden band F

West Hampstead Office 020 7794 7111

Hillfield Road,  
West Hampstead, NW6  
Approx. Gross Internal Area  
982 Sq Ft - 91.23 Sq M



Lower Ground Floor

Measured in accordance with RICS guidelines. Every attempt is made to ensure accuracy, however all measurements are approximate. This floor plan is for illustrative purposes only and is not to scale. © Datagraphy Ltd 2016 Photographs + Floorplans + Virtual Tours Tel: 0203 643 4401 www.datagraphy.com

The particulars do not constitute part of an offer or contract. The particulars, including text, photographs and plans, are for the guidance only of prospective purchasers/tenants and must not be relied upon as statements of fact. The descriptions provided therein represent the opinion of the author and whilst given in good faith should not be construed as statements of fact. Nothing in these particulars shall be deemed a statement that the property is in good condition or otherwise or that any services or facilities are in good working order. All measurements are approximate