

# Parkheath

*Sold on Service*

**Parsifal Road NW6**

**£3,300 PCM (£762 per week) - Camden Band F**



Beautiful 3 bedroom split level flat  
Contemporary open plan kitchen

1212 Sq Ft / 112.59 Sq M

High ceilings

Close to all West Hampstead amenities and transport facilities

West Hampstead Office 020 7794 7111

Large reception/dining room with parquet flooring

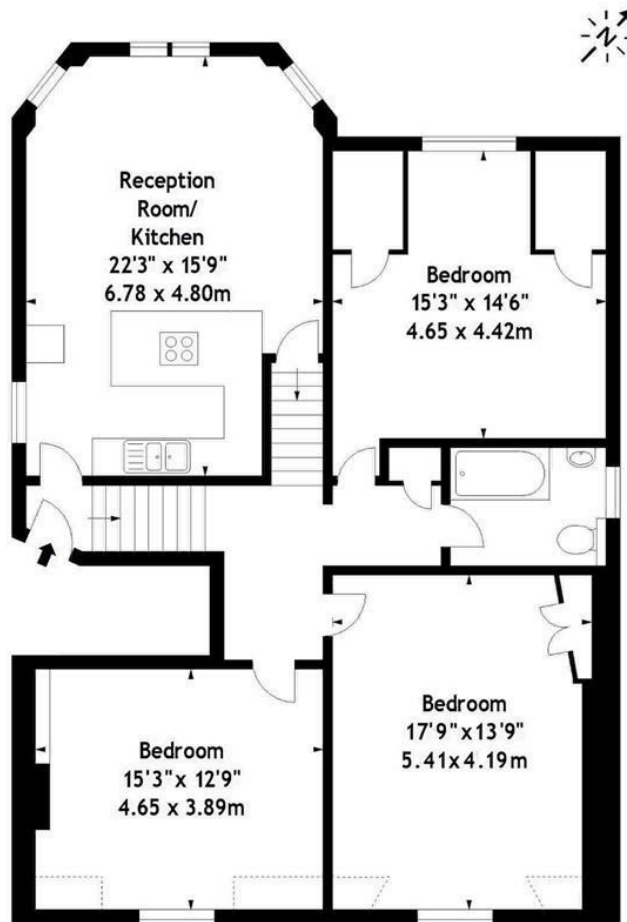
Top floor within attractive double fronted period conversion

Bathroom/WC

Highly favoured residential location

EPC energy rating: D / Council tax: Camden band F

Parsifal Road, NW6  
Approx. Gross Internal Area  
1212 Sq Ft - 112.59 Sq M



SECOND FLOOR

Measured in accordance with RICS guidelines. Every attempt is made to ensure accuracy, however all measurements are approximate. This floor plan is for illustrative purposes only and is not to scale.  
© Datography Ltd 2016  
Photographs\* Floorplans\* Virtual Tours  
Tel: 0845 643 4401 www.datography.com

The particulars do not constitute part of an offer or contract. The particulars, including text, photographs and plans, are for the guidance only of prospective purchasers/tenants and must not be relied upon as statements of fact. The descriptions provided therein represent the opinion of the author and whilst given in good faith should not be construed as statements of fact. Nothing in these particulars shall be deemed a statement that the property is in good condition or otherwise or that any services or facilities are in good working order. All measurements are approximate