

Parkheath

Sold on Service

112 Greencroft Gardens NW6
£2,300 PCM (£531 per week) - Camden Band D



Sought after South Hampstead conservation area
Reception room with wooden floors

Fitted storage in both bedrooms

Kitchen

0.4 miles to Finchley Road underground

West Hampstead Office 020 7794 7111

Top floor (3rd) flat in converted period property

One double bedroom and one good size single bedroom

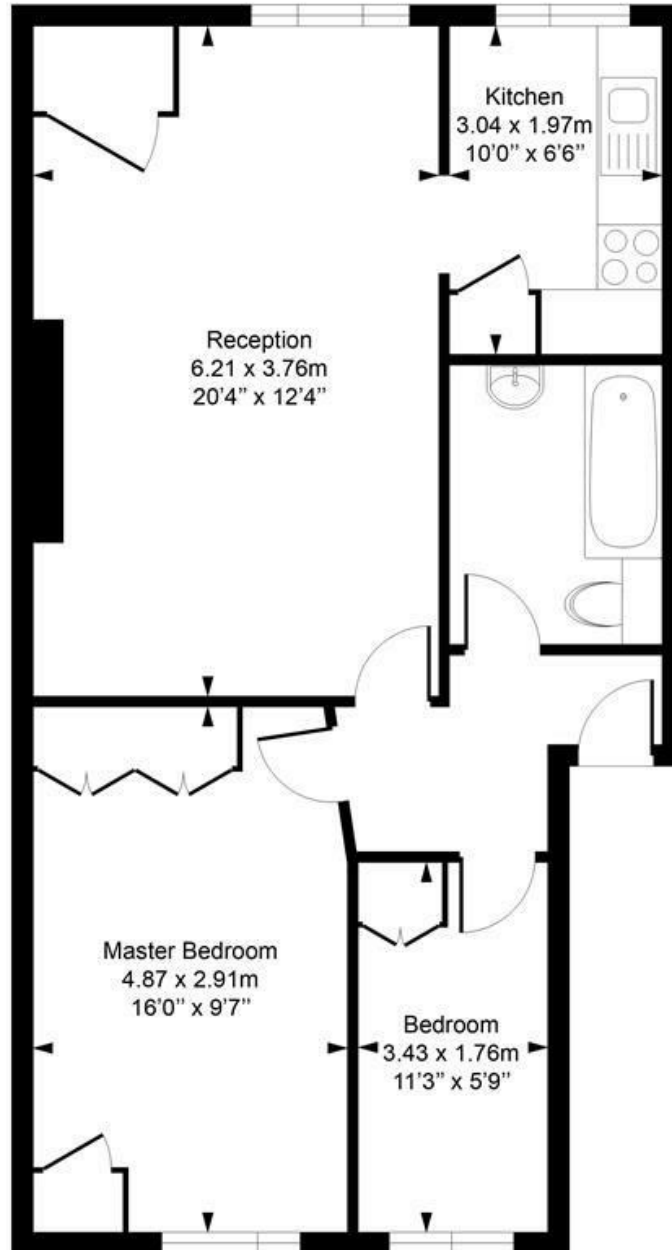
Bathroom/WC

Double glazed

EPC energy rating D / Council tax: Camden band D

Greencroft Gardens

Approximate Gross Internal Area = 60.4 Sq m / 650 sq ft



Third Floor

Measured in accordance with RICS guidelines. Every attempt is made to ensure accuracy

However all measurements are approximate.

The floor plan is illustrative purposes only and is not to scale

ELLIE CLAIRE PHOTOGRAPHY LTD

www.ellieclairephotography.com

The particulars do not constitute part of an offer or contract. The particulars, including text, photographs and plans, are for the guidance only of prospective purchasers/tenants and must not be relied upon as statements of fact. The descriptions provided therein represent the opinion of the author and whilst given in good faith should not be construed as statements of fact. Nothing in these particulars shall be deemed a statement that the property is in good condition or otherwise or that any services or facilities are in good working order. All measurements are approximate