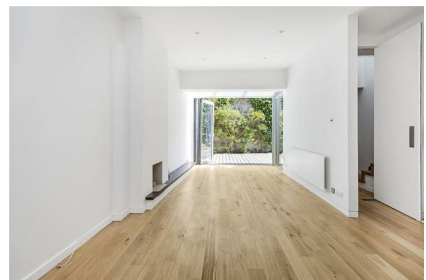


Parkheath

Sold on Service

Fairhazel Gardens NW6

£3,750 PCM (£865 per week) - Camden Band G



Lovely 3 bedroom modern house

Redecorated throughout

Secure off street parking for 1 car

Arranged over 3 floors

3 minute walk to South Hampstead overground station

Small privately gated mews development

Wooden floors

Open plan reception/dining/kitchen

Family bathroom and en-suite shower room

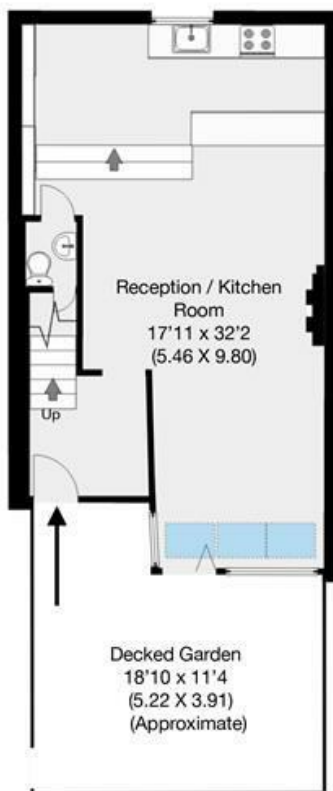
EPC Rating D / Council tax: Camden band G

West Hampstead Office 020 7794 7111

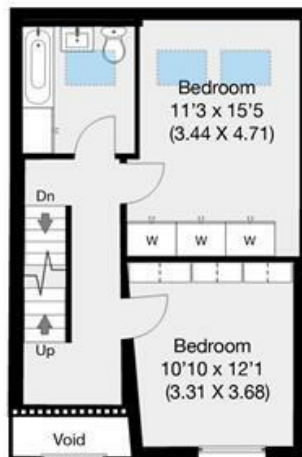


Fairhazel Gardens, London, NW6

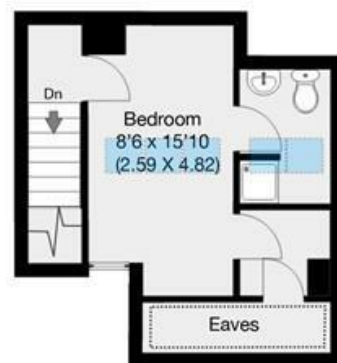
Approximate Gross Internal Area 115 sqm / 1238 sqft
(Excluding Eaves)



Ground Floor



First Floor



Second Floor

THIS FLOOR PLAN IS PRODUCED FOR PARKHEATH SUBMITTED BY ARCHIMEDIA web: www.archi-media.co.uk

Whilst every attempt has been made to ensure the accuracy of the floor plan contained here, measurements of doors, windows and rooms are approximate and no responsibility is taken for any error, omission or misstatement. These plans are for representation purposes only and should be used as such by any prospective buyer or lease. Specifically no guarantee is given on the gross internal floor area of the property if quoted on this plan and any figures given is initial guidance only and should be treated as such.

The particulars do not constitute part of an offer or contract. The particulars, including text, photographs and plans, are for the guidance only of prospective purchasers/tenants and must not be relied upon as statements of fact. The descriptions provided therein represent the opinion of the author and whilst given in good faith should not be construed as statements of fact. Nothing in these particulars shall be deemed a statement that the property is in good condition or otherwise or that any services or facilities are in good working order. All measurements are approximate