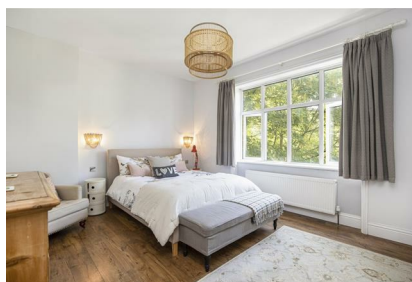


Parkheath

Sold on Service

Brondesbury Park NW6

£3,500 PCM (£808 per week) - Brent (First Floor) Band E



Stunning 3 double bedroom apartment

Communal rear garden

Wooden floors and high ceilings throughout

Semi open plan fitted kitchen/diner with all appliances

Walking distance to both Queens Park and Willesden

Green transport and amenities

1st floor within double fronted period conversion

1201 Sq Ft / 111.57 Sq M

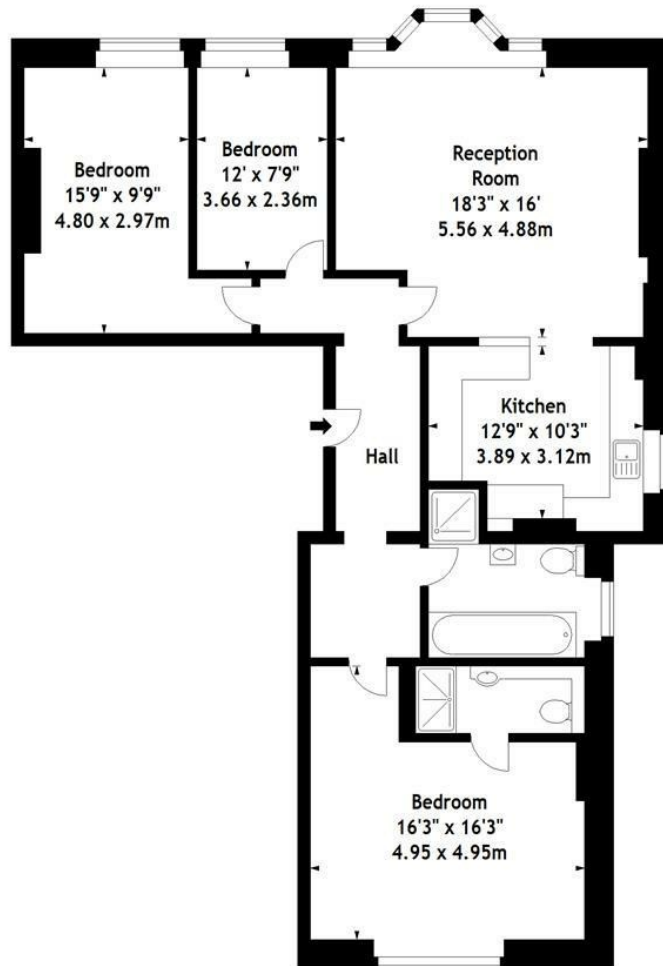
Superb reception/dining room

Master bedroom with en suite shower room

EPC: Rating: C, Council Tax: Brent band E

West Hampstead Office 020 7794 7111

Brondesbury Park,
Queens Park, NW6
Approx. Gross Internal Area
1201 Sq Ft - 111.57 Sq M



First Floor

Measured in accordance with RICS guidelines. Every attempt is made to ensure accuracy, however all measurements are approximate. This floor plan is for illustrative purposes only and is not to scale.
© Datagraphy Ltd 2016
Photographs * Floorplans * Virtual Tours
Tel: 0845 643 4401 www.datagraphy.com

The particulars do not constitute part of an offer or contract. The particulars, including text, photographs and plans, are for the guidance only of prospective purchasers/tenants and must not be relied upon as statements of fact. The descriptions provided therein represent the opinion of the author and whilst given in good faith should not be construed as statements of fact. Nothing in these particulars shall be deemed a statement that the property is in good condition or otherwise or that any services or facilities are in good working order. All measurements are approximate