

Parkheath

Sold on Service

Hamilton Terrace NW8

£3,250 PCM (£750 per week) - Westminster City Band F



2 double bedroom apartment

Lift, caretaker and attractive communal garden

Wooden floors throughout

Large reception/dining room

Communal heating and water

Sought after location

974 Sq Ft / 90.48 Sq M

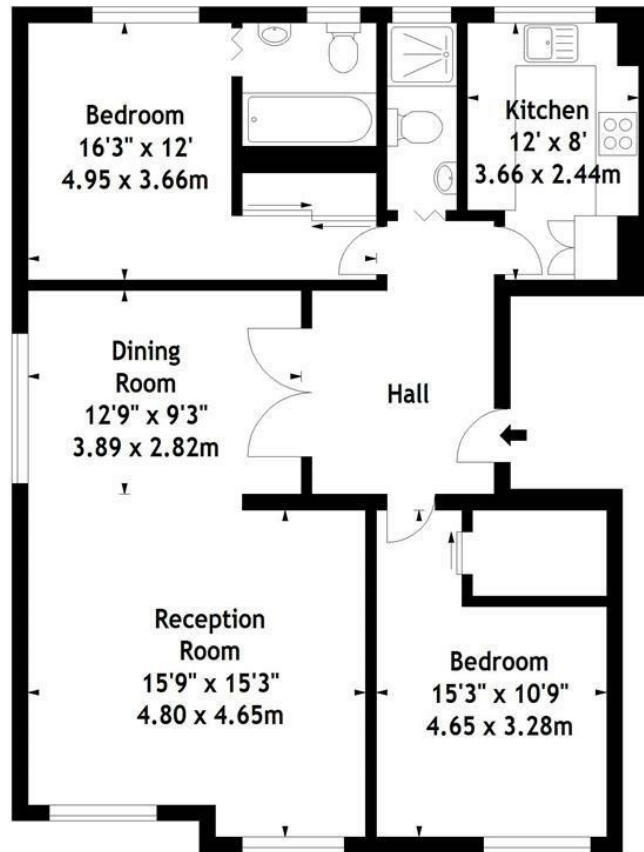
High ceilings and large windows

2 bathrooms (1 en suite)

Garage en-bloc

West Hampstead Office 020 7794 7111

Marlborough Lodge,
Hamilton Terrace, NW8
Approx. Gross Internal Area
974 Sq Ft - 90.48 Sq M



First Floor

Measured in accordance with RICS guidelines. Every attempt is made to ensure accuracy, however all measurements are approximate. This floor plan is for illustrative purposes only and is not to scale.
© Datagraphy Ltd 2015
Photographs * Floorplans * Virtual Tours
Tel: 0845 643 4401 www.datagraphy.com

The particulars do not constitute part of an offer or contract. The particulars, including text, photographs and plans, are for the guidance only of prospective purchasers/tenants and must not be relied upon as statements of fact. The descriptions provided therein represent the opinion of the author and whilst given in good faith should not be construed as statements of fact. Nothing in these particulars shall be deemed a statement that the property is in good condition or otherwise or that any services or facilities are in good working order. All measurements are approximate