

# Parkheath

*Sold on Service*

**Finchley Road NW3**

**£3,250 PCM (£750 per week) - Camden Band D**



4 bedroom duplex apartment

Stunning decked terrace

Large kitchen/diner

Wooden floors

Guest WC

1130 Sq Ft / 105 Sq M

Arranged over 3rd and 4th floors

Reception room

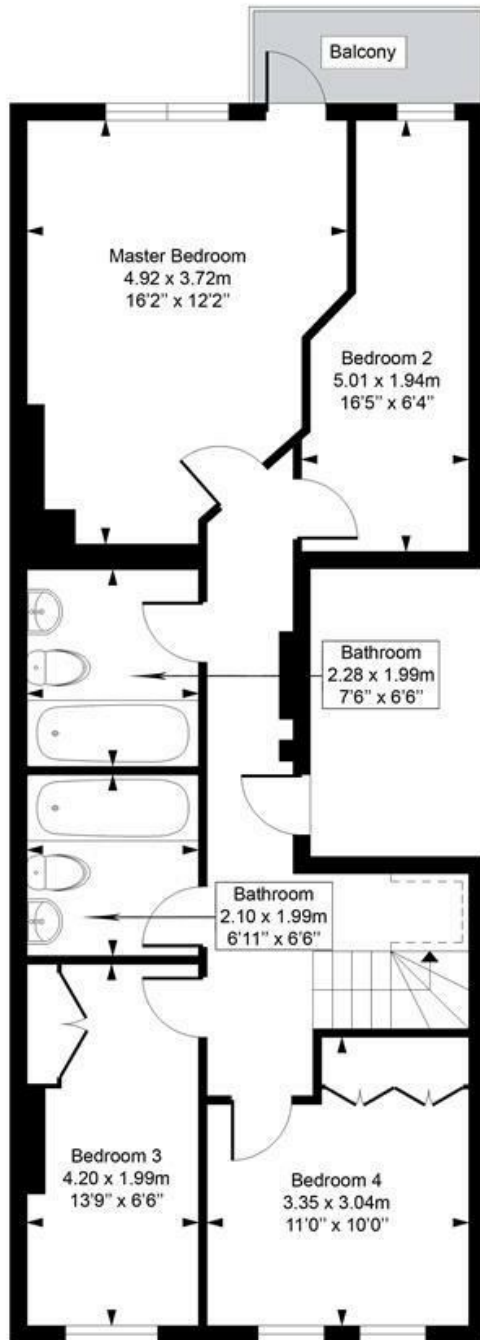
2 bathrooms

1 minute walk to Finchley Road underground station

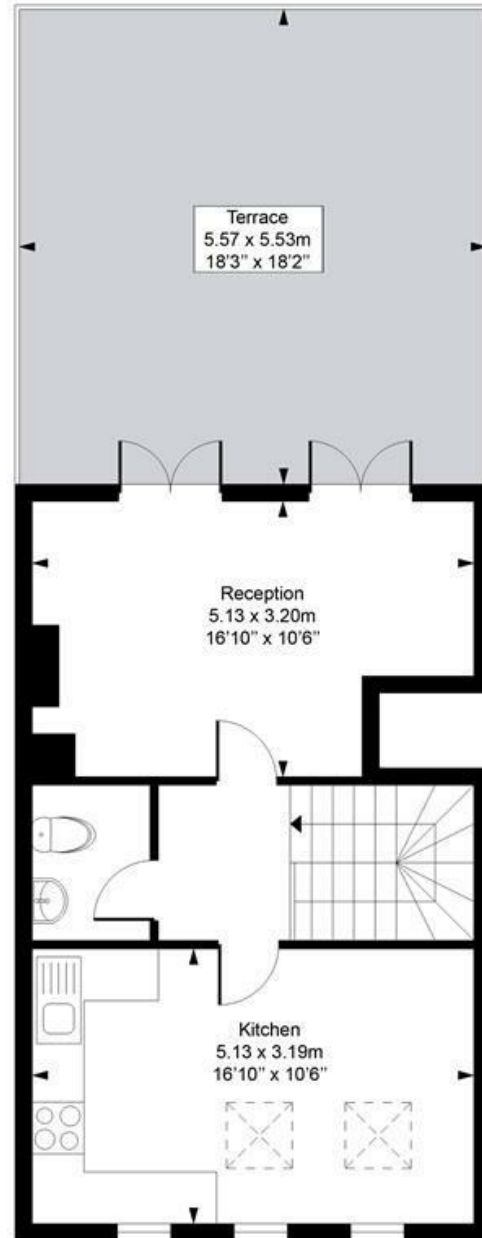
West Hampstead Office 020 7794 7111

# Finchley Road

Approximate Gross Internal Area = 105 Sq m / 1130 sq ft



**Third Floor**



**Fourth Floor**

Measured in accordance with RICS guidelines. Every attempt is made to ensure accuracy

However all measurements are approximate.

The floor plan is illustrative purposes only and is not to scale

ELLIE CLAIRE PHOTOGRAPHY LTD

[www.ellieclairephotography.com](http://www.ellieclairephotography.com)

The particulars do not constitute part of an offer or contract. The particulars, including text, photographs and plans, are for the guidance only of prospective purchasers/tenants and must not be relied upon as statements of fact. The descriptions provided therein represent the opinion of the author and whilst given in good faith should not be construed as statements of fact. Nothing in these particulars shall be deemed a statement that the property is in good condition or otherwise or that any services or facilities are in good working order. All measurements are approximate