

Parkheath

Sold on Service

Loveridge Road NW6

£1,650 PCM (£381 per week) - Camden Band C



Attractive 1 bedroom apartment

Reception with wooden floors

Tiled bathroom

Conveniently located for all West Hampstead and
Kilburn amenities and transport

Bright rooms throughout

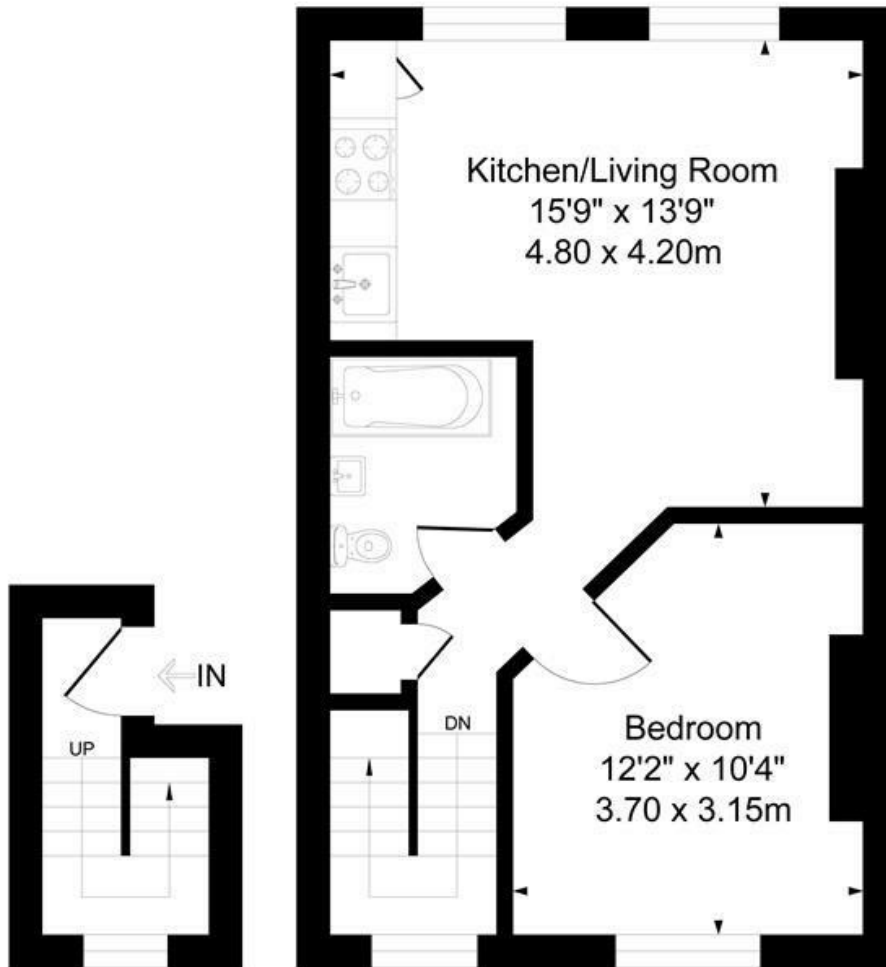
Open plan kitchen/dining area

2nd floor (top floor) of a period conversion

West Hampstead Office 020 7794 7111

Loveridge Road

Approximate Gross Internal Area = 42 sq m / 451 sq ft



First Floor

Second Floor

Measured in accordance with RICS guidelines. Every attempt is made to ensure accuracy
However all measurements are approximate.
The Floor plan is illustrative purposes Only and is not to scale
ELLIE CLAIRE PHOTOGRAPHY LTD

The particulars do not constitute part of an offer or contract. The particulars, including text, photographs and plans, are for the guidance only of prospective purchasers/tenants and must not be relied upon as statements of fact. The descriptions provided therein represent the opinion of the author and whilst given in good faith should not be construed as statements of fact. Nothing in these particulars shall be deemed a statement that the property is in good condition or otherwise or that any services or facilities are in good working order. All measurements are approximate