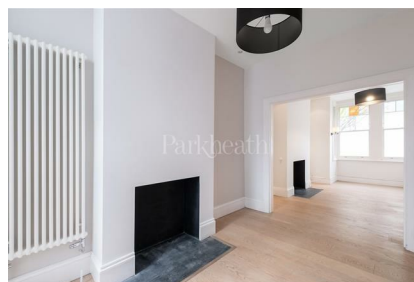


Parkheath

Sold on Service

Glenbrook Road NW6

£4,600 PCM (£1062 per week) - Camden Band F



Charming 4 double bedroom family house
1483 Sq Ft / 137.8 Sq M
Double reception/dining room with wooden floors
2 bathrooms (1 en suite)
Newly decorated and new fitted carpets

Arranged over 3 floors
Courtyard garden, large roof terrace and balcony
Kitchen/diner leading to garden
Central West Hampstead location

West Hampstead Office 020 7794 7111

Glenbrook Road

Approximate Gross Internal Area = 137.8 sq m / 1483 sq ft
(Excluding Eaves)

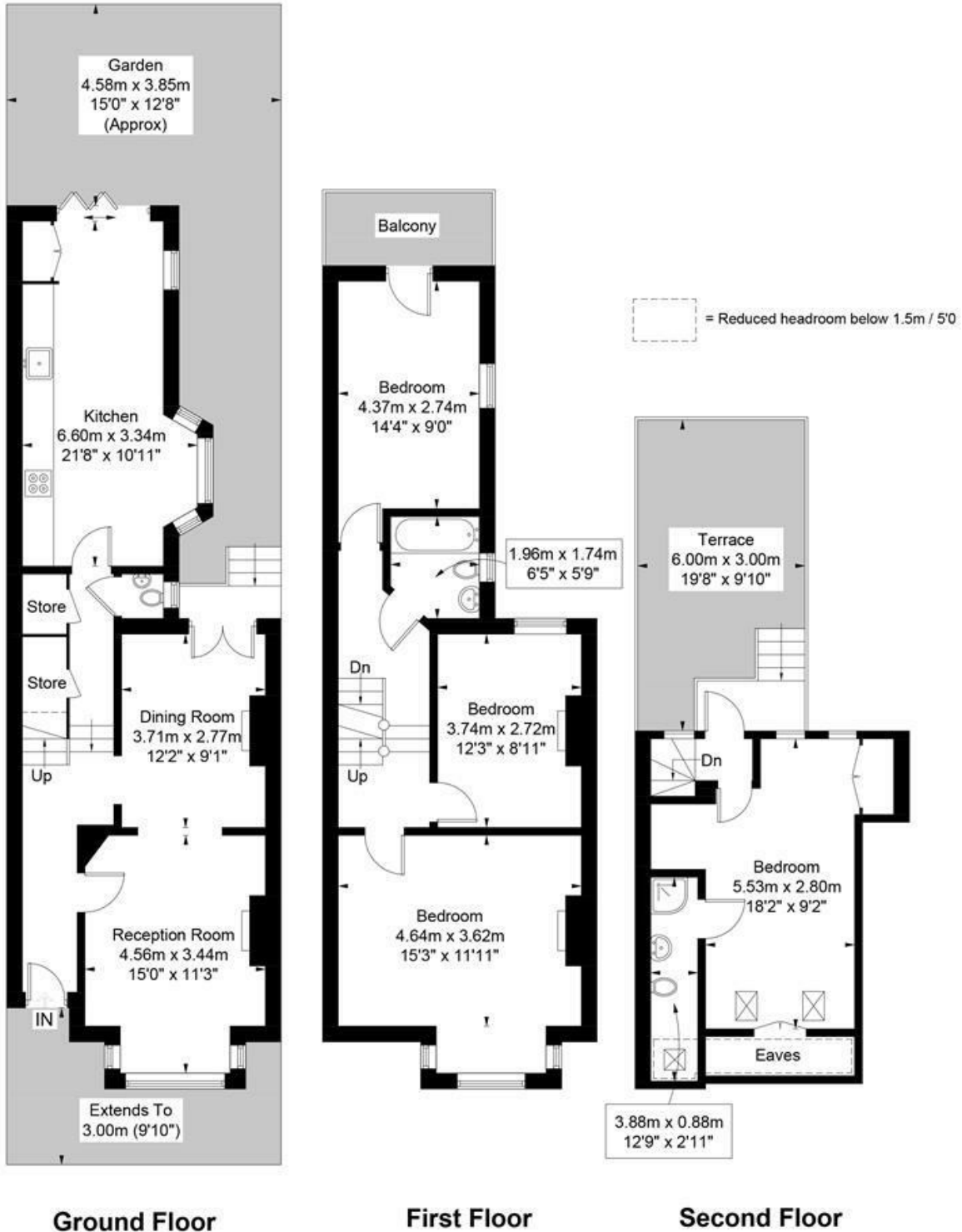


Illustration for identification purposes only, measurements are approximate, not to scale. FloorplansUsketch.com © 2017 (ID367984)

The particulars do not constitute part of an offer or contract. The particulars, including text, photographs and plans, are for the guidance only of prospective purchasers/tenants and must not be relied upon as statements of fact. The descriptions provided therein represent the opinion of the author and whilst given in good faith should not be construed as statements of fact. Nothing in these particulars shall be deemed a statement that the property is in good condition or otherwise or that any services or facilities are in good working order. All measurements are approximate