

# Parkheath

*Sold on Service*

---

**Compayne Gardens NW6**

**£3,200 PCM (£738 per week) - Camden Band F**



Attractive and spacious apartment

2 bathrooms (1 en suite shower room)

Fitted kitchen

High ceilings

1st floor within a double fronted period conversion

3 bedrooms (2 doubles & 1 single)

Elegant reception/dining room

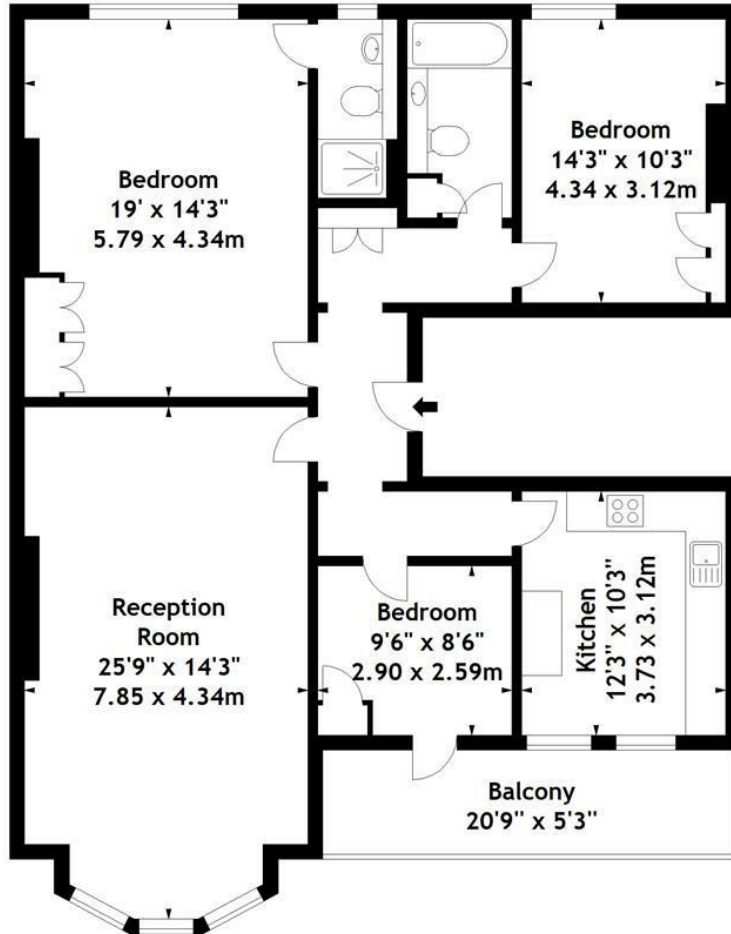
Private terrace

1226 Sq Ft / 113.90 Sq M

South Hampstead conservation area

West Hampstead Office 020 7794 7111

Compayne Gardens, NW6  
Approx. Gross Internal Area  
1226 Sq Ft - 113.90 Sq M



### First Floor

Measured in accordance with RICS guidelines. Every attempt is made to ensure accuracy, however all measurements are approximate. This floor plan is for illustrative purposes only and is not to scale.

© Datagraphy Ltd 2015

Photographs \* Floorplans \* Virtual Tours  
Tel: 0845 643 4401 [www.datagraphy.com](http://www.datagraphy.com)

The particulars do not constitute part of an offer or contract. The particulars, including text, photographs and plans, are for the guidance only of prospective purchasers/tenants and must not be relied upon as statements of fact. The descriptions provided therein represent the opinion of the author and whilst given in good faith should not be construed as statements of fact. Nothing in these particulars shall be deemed a statement that the property is in good condition or otherwise or that any services or facilities are in good working order. All measurements are approximate