

Parkheath

Sold on Service

Belsize Road NW6

£4,250 PCM (£981 per week) - Camden Band G



Well presented 4 bedroom family house

Secure driveway with electric gates

Garden and balcony

Contemporary fitted kitchen

Located within moments of Swiss Cottage and
Finchley Road amenities and transport

Off street parking for 2 cars

Arranged over 3 floors

2 reception rooms

2 bathrooms and guest WC

South Hampstead Office 020 7625 4567

West Hampstead Office 020 7794 7111

Belsize Road

Approximate Gross Internal Area = 151 sq m / 1629 sq ft

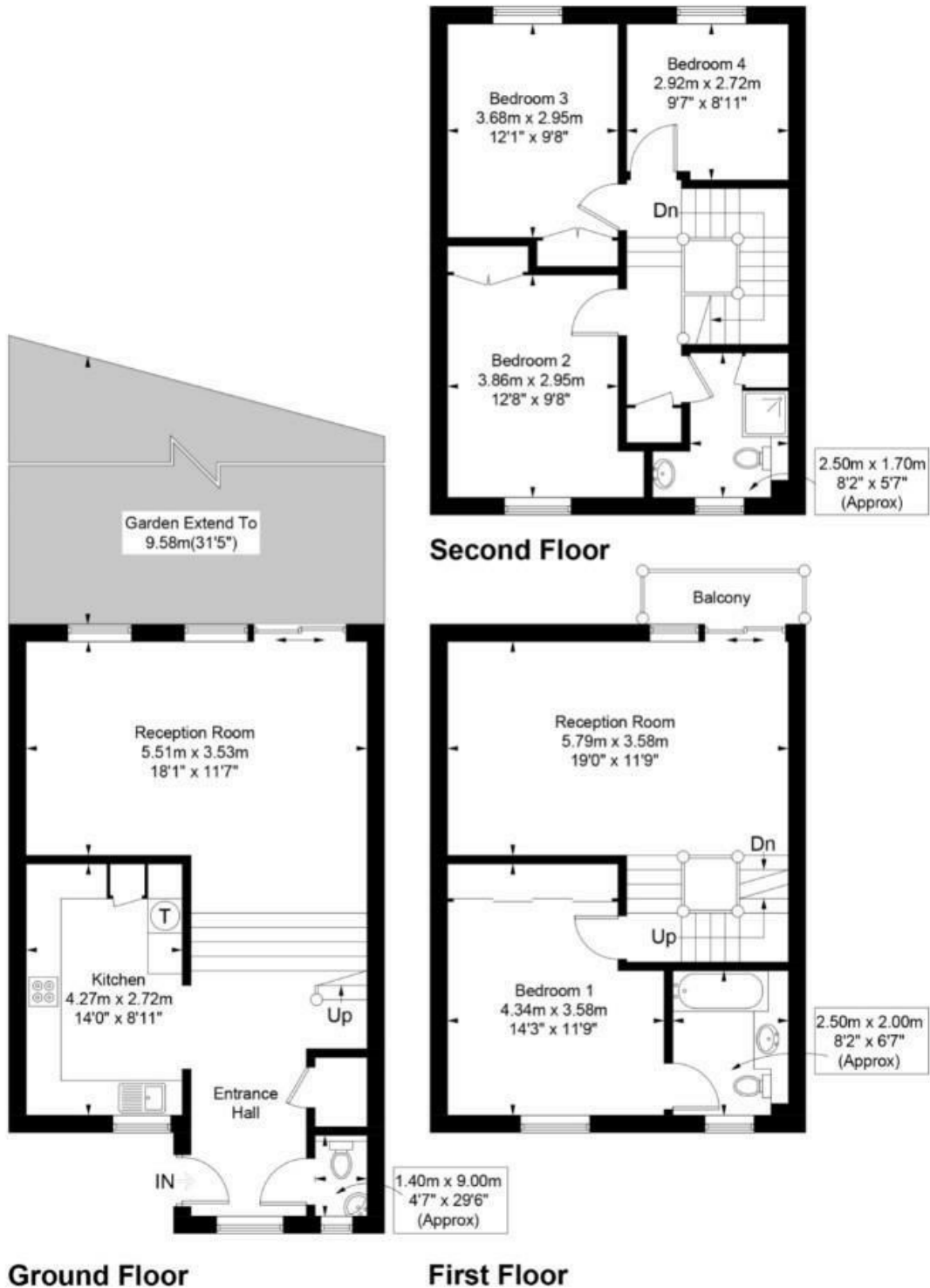


Illustration for identification purposes only, measurements are approximate, not to scale. FloorplansUsketch.com © 2017 (ID393388)
ELLIE CLAIRE PHOTOGRAPHY LTD

The particulars do not constitute part of an offer or contract. The particulars, including text, photographs and plans, are for the guidance only of prospective purchasers/tenants and must not be relied upon as statements of fact. The descriptions provided therein represent the opinion of the author and whilst given in good faith should not be construed as statements of fact. Nothing in these particulars shall be deemed a statement that the property is in good condition or otherwise or that any services or facilities are in good working order. All measurements are approximate