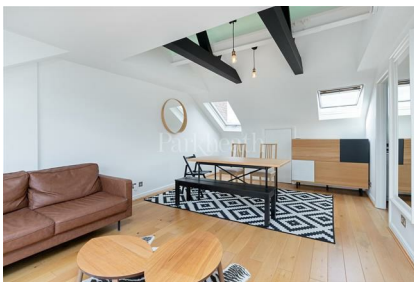


# Parkheath

*Sold on Service*

## Greencroft Gardens NW6

£3,100 PCM (£715 per week) - Camden Band D



Duplex 2nd and 3rd floor apartment  
2 bathrooms (1 en-suite shower room)  
Reception room with wooden floors and beamed ceiling  
Eaves storage  
5 minute walk to Finchley Road underground station

3 double bedrooms  
Large south facing balcony  
Fitted kitchen  
South Hampstead conservation area

South Hampstead Office 020 7625 4567  
West Hampstead Office 020 7794 7111

## Greencroft Gardens

Approximate Gross Internal Floor Area = 110.75 SQ M / 1192 SQ FT



This plan is for layout guidance only. Drawn in accordance with RICS guidelines. Not drawn to scale unless stated. Windows & door openings are approximate. Whilst every care is taken in the preparation of this plan, please check all dimensions, shapes & compass bearings before marking any decisions reliant upon them.

ELLIE CLAIRE PHOTOGRAPHY LTD  
[www.ellieclairephotography.com](http://www.ellieclairephotography.com)

The particulars do not constitute part of an offer or contract. The particulars, including text, photographs and plans, are for the guidance only of prospective purchasers/tenants and must not be relied upon as statements of fact. The descriptions provided therein represent the opinion of the author and whilst given in good faith should not be construed as statements of fact. Nothing in these particulars shall be deemed a statement that the property is in good condition or otherwise or that any services or facilities are in good working order. All measurements are approximate