

Parkheath

Sold on Service

Dennington Park Road NW6

£3,300 PCM (£762 per week) - Camden Band E



Spacious and well proportioned apartment

3 double bedrooms

Reception room

Central West Hampstead

6 minute walk to West Hampstead underground

2nd floor of an extremely well located mansion building

Kitchen/diner

Suitable for professional sharers

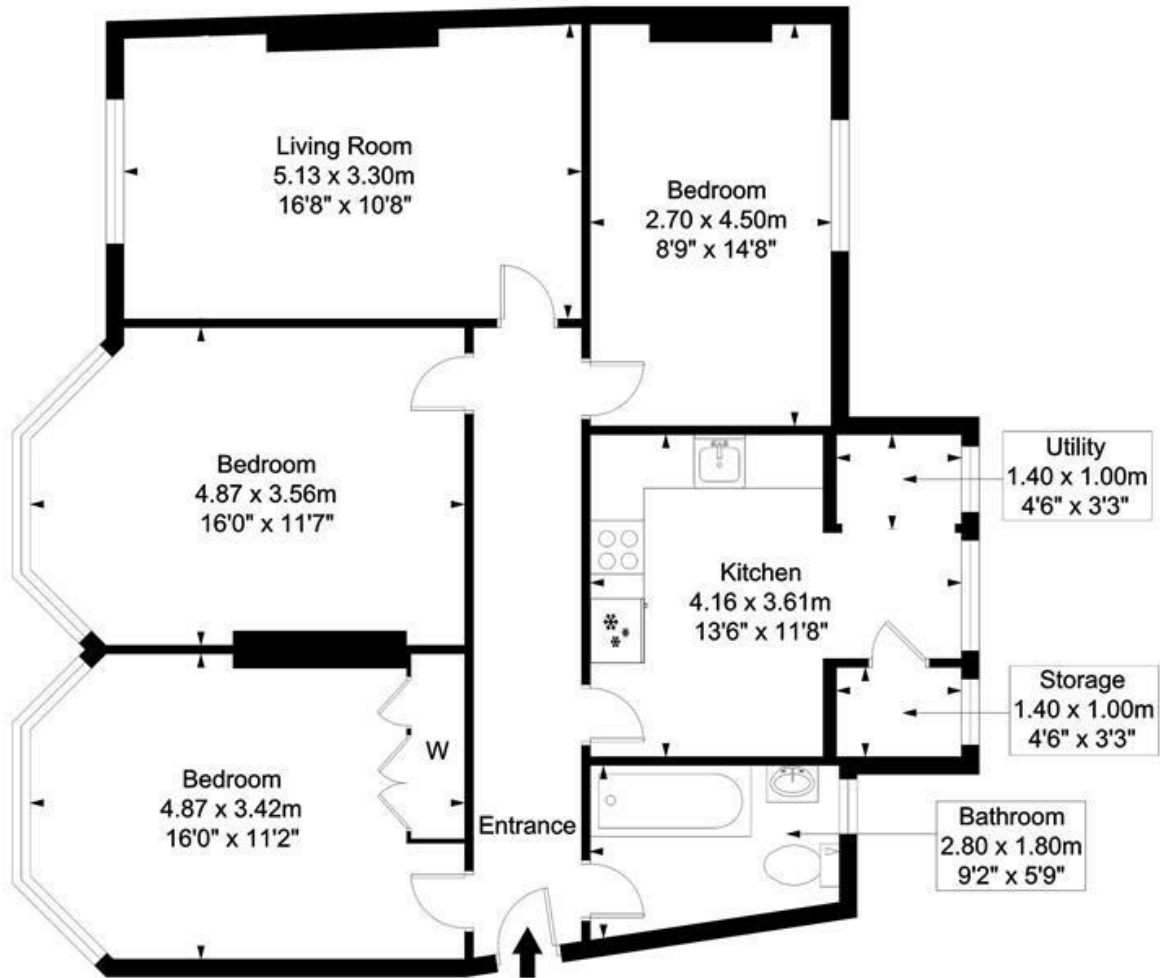
3 minute walk to West Hampstead Thameslink

EPC rating: C / Council tax: band E

West Hampstead Office 020 7794 7111

Dennington Park Road

Approximate Gross Internal Floor Area = 100.50 SQ M / 1082 SQ FT



Second Floor

This plan is for layout guidance only. Drawn in accordance with RICS guidelines. Not drawn to scale unless stated. Windows & door openings are approximate. Whilst every care is taken in the preparation of this plan, please check all dimensions, shapes & compass bearings before marking any decisions reliant upon them.

ELLIE CLAIRE PHOTOGRAPHY LTD
www.ellieclairephotography.com

The particulars do not constitute part of an offer or contract. The particulars, including text, photographs and plans, are for the guidance only of prospective purchasers/tenants and must not be relied upon as statements of fact. The descriptions provided therein represent the opinion of the author and whilst given in good faith should not be construed as statements of fact. Nothing in these particulars shall be deemed a statement that the property is in good condition or otherwise or that any services or facilities are in good working order. All measurements are approximate