

# Parkheath

*Sold on Service*

---

**Priory Road NW6**

**£4,300 PCM (£992 per week) - Camden Band F**



Exceptional upper floor duplex apartment

South Hampstead conservation area

3 bedrooms, 3 bathrooms

Wooden floors

Close to West Hampstead amenities

1704 Sq Ft / 158.3 Sq M

Stunning kitchen/dining room

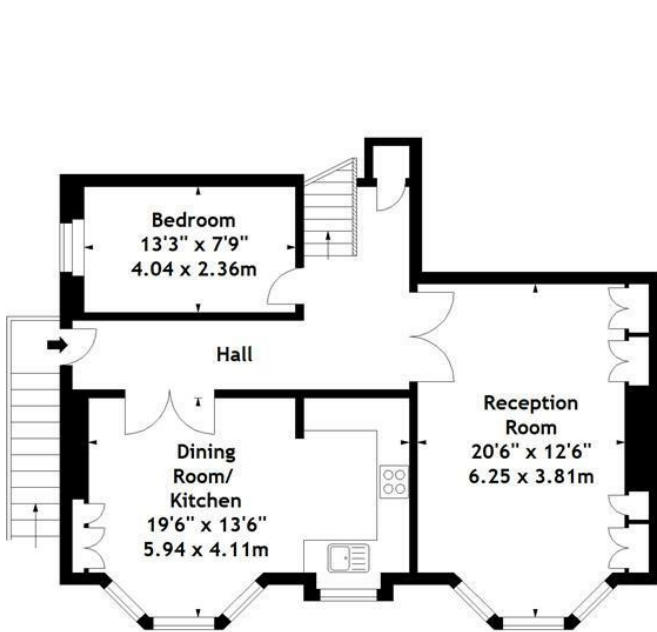
Spacious reception room with bay window

Private entrance

EPC: Rating D, Council Tax: Camden band F

West Hampstead Office 020 7794 7111

Priory Road, NW6  
Approx. Gross Internal Area  
1704 Sq Ft - 158.3 Sq M



First Floor



Second Floor

This plan is for layout guidance only. Not drawn to scale unless stated.  
Windows & door openings are approximate. Whilst every care is taken in the preparation of  
this plan, please check all dimensions, shapes & compass bearings before making any  
decisions reliant upon them. © Datography 2016

The particulars do not constitute part of an offer or contract. The particulars, including text, photographs and plans, are for the guidance only of prospective purchasers/tenants and must not be relied upon as statements of fact. The descriptions provided therein represent the opinion of the author and whilst given in good faith should not be construed as statements of fact. Nothing in these particulars shall be deemed a statement that the property is in good condition or otherwise or that any services or facilities are in good working order. All measurements are approximate