

# Parkheath

*Sold on Service*

**Minster Mews NW2**

**£3,750 PCM (£865 per week) - Camden Band F**



Fantastic 4 bedroom family house

Arranged over 3 floors

Bright double reception/dining room with sky lights

Ground floor utility area and WC

0.9 miles from West Hampstead transport links

3 bathrooms (2 en-suite)

1554 Sq Ft / 144.37 Sq M

Contemporary fitted kitchen

Private garage and off-street parking

0.6 miles from Cricklewood station (Overground)

South Hampstead Office 020 7625 4567

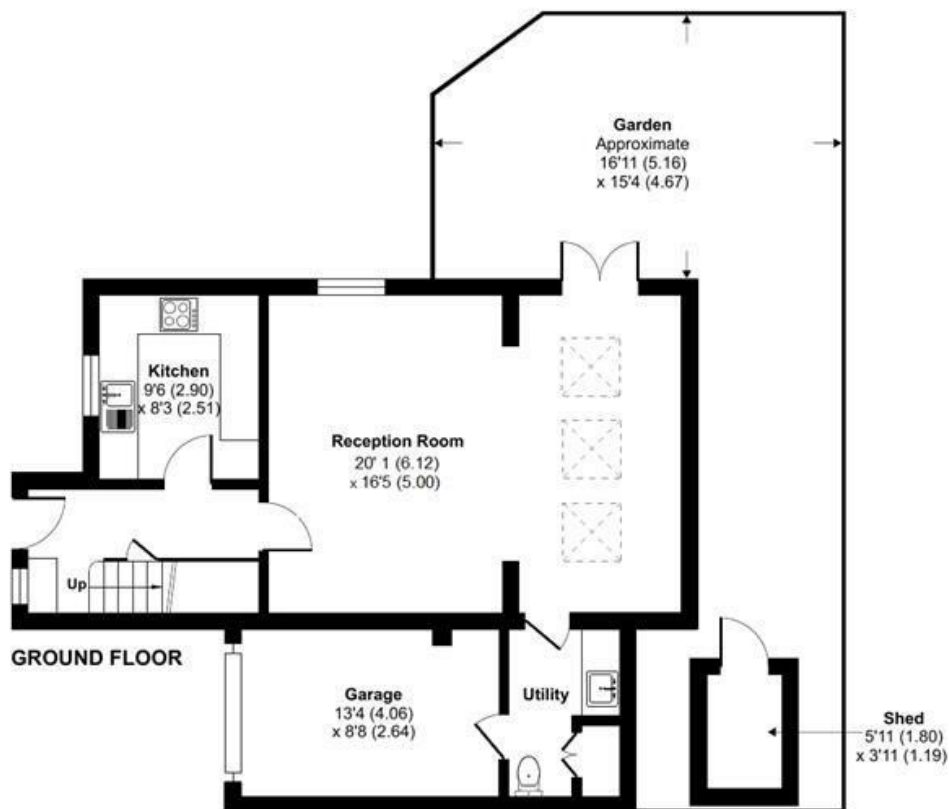
West Hampstead Office 020 7794 7111

# Minster Road, West Hampstead NW2



Total = 1554 sq ft / 144.37 sq m  
(includes garage)

For identification only - Not to scale



Floor plan produced in accordance with RICS Property Measurement Standards incorporating International Property Measurement Standards (IPMS2 Residential). © richcom 2021. Produced for Dutch & Dutch. REF: 856734

The particulars do not constitute part of an offer or contract. The particulars, including text, photographs and plans, are for the guidance only of prospective purchasers/tenants and must not be relied upon as statements of fact. The descriptions provided therein represent the opinion of the author and whilst given in good faith should not be construed as statements of fact. Nothing in these particulars shall be deemed a statement that the property is in good condition or otherwise or that any services or facilities are in good working order. All measurements are approximate