

Parkheath

Sold on Service

Fairhazel Gardens NW6

£3,250 PCM (£750 per week) - Camden Band E



Stunning ground floor apartment

Access on to large communal garden

Original wood floors and panelled ceilings

2 bathrooms (1 en suite shower room)

4 minute walk to Finchley Road underground

Beautiful courtyard paved garden

Beautiful reception room with large bay window overlooking garden

Fitted kitchen with appliances

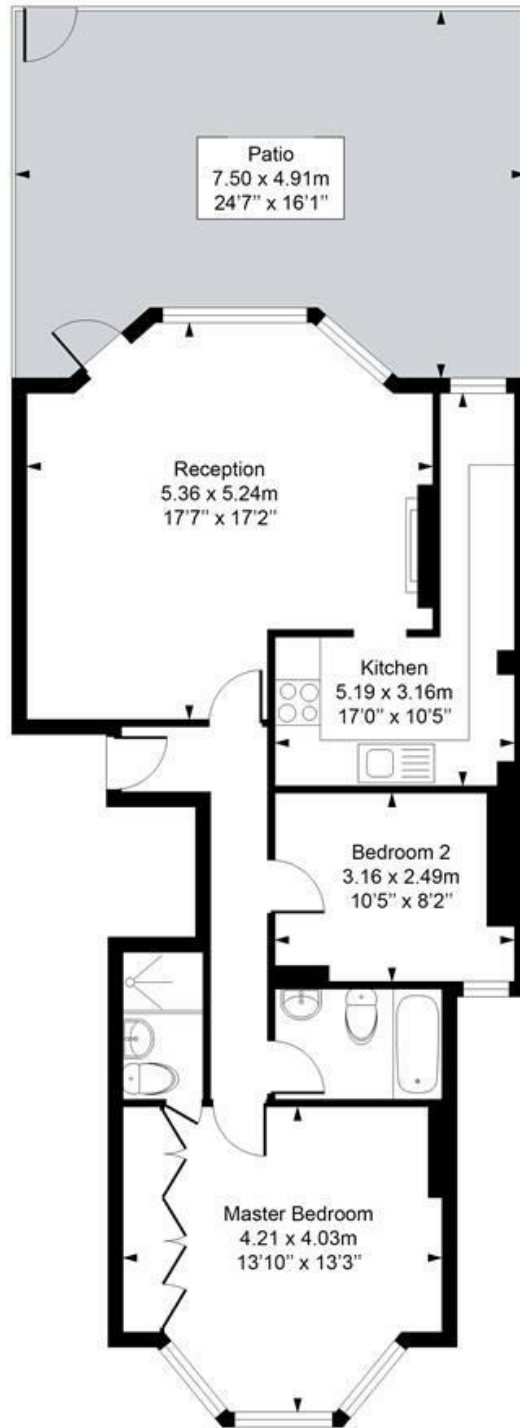
South Hampstead conservation area

EPC rating D / Council tax: Camden band E

West Hampstead Office 020 7794 7111

Fairhazel Gardens

Approximate Gross Internal Area = 68.1 Sq m / 733 sq ft



Ground Floor

Measured in accordance with RICS guidelines. Every attempt is made to ensure accuracy
However all measurements are approximate.

The floor plan is illustrative purposes only and is not to scale

ELLIE CLAIRE PHOTOGRAPHY LTD

www.ellieclairephotography.com

The particulars do not constitute part of an offer or contract. The particulars, including text, photographs and plans, are for the guidance only of prospective purchasers/tenants and must not be relied upon as statements of fact. The descriptions provided therein represent the opinion of the author and whilst given in good faith should not be construed as statements of fact. Nothing in these particulars shall be deemed a statement that the property is in good condition or otherwise or that any services or facilities are in good working order. All measurements are approximate