

# Parkheath

*Sold on Service*

---

**Belsize Road NW6**

**£3,250 PCM (£750 per week) - Camden Band E**



Stunning 3 double bedroom duplex apartment  
3 bathrooms (2 en-suite)

Wooden floors throughout (carpeted to  
staircases)

Moments to local amenities on Fairfax Road

Superb reception room with large windows

Large open plan contemporary kitchen with  
appliances

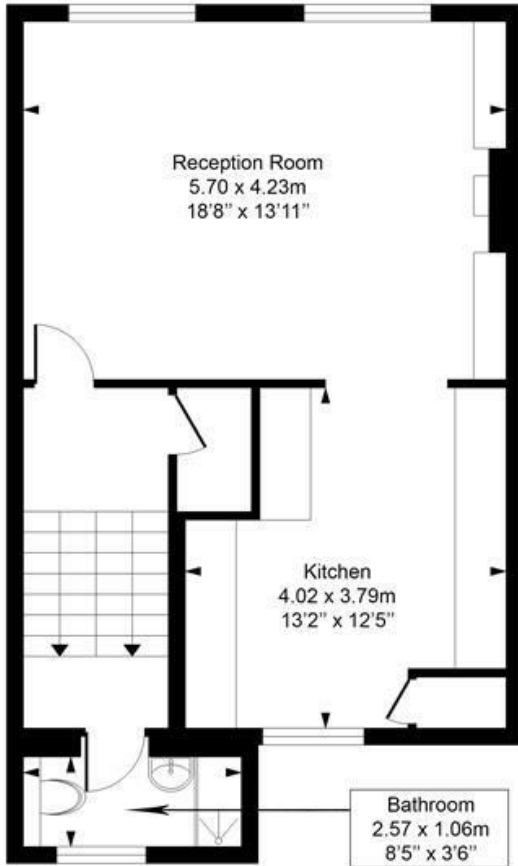
Air conditioned (in the bedrooms)

Short walk to Swiss Cottage and Finchley Road

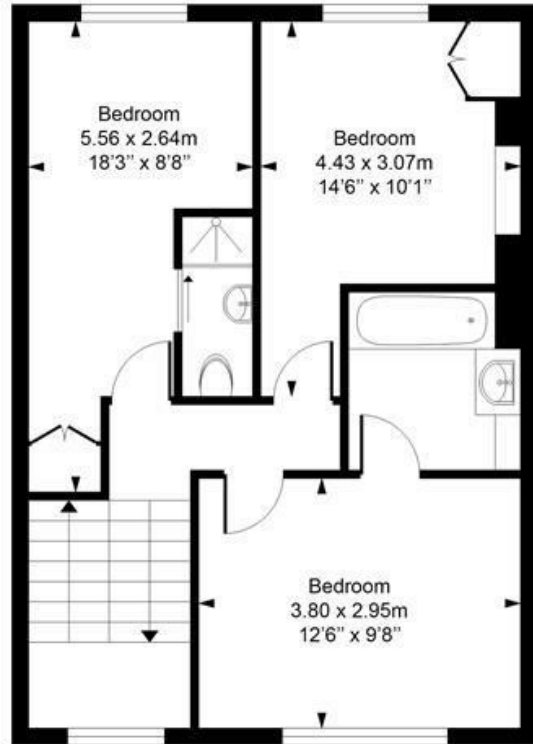
West Hampstead Office 020 7794 7111

# Belsize road

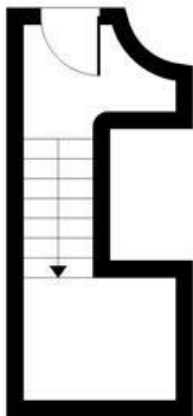
Approximate Gross Internal Area = 105.4 Sq m / 1135 sq ft



**First Floor**



**Second Floor**



**Ground Floor**

Measured in accordance with RICS guidelines. Every attempt is made to ensure accuracy

However all measurements are approximate.

The floor plan is illustrative purposes only and is not to scale

ELLIE CLAIRE PHOTOGRAPHY LTD

[www.ellieclairephotography.com](http://www.ellieclairephotography.com)

The particulars do not constitute part of an offer or contract. The particulars, including text, photographs and plans, are for the guidance only of prospective purchasers/tenants and must not be relied upon as statements of fact. The descriptions provided therein represent the opinion of the author and whilst given in good faith should not be construed as statements of fact. Nothing in these particulars shall be deemed a statement that the property is in good condition or otherwise or that any services or facilities are in good working order. All measurements are approximate