

Parkheath

Sold on Service

Canfield Gardens NW6

£2,100 PCM (£485 per week) - Camden Band D



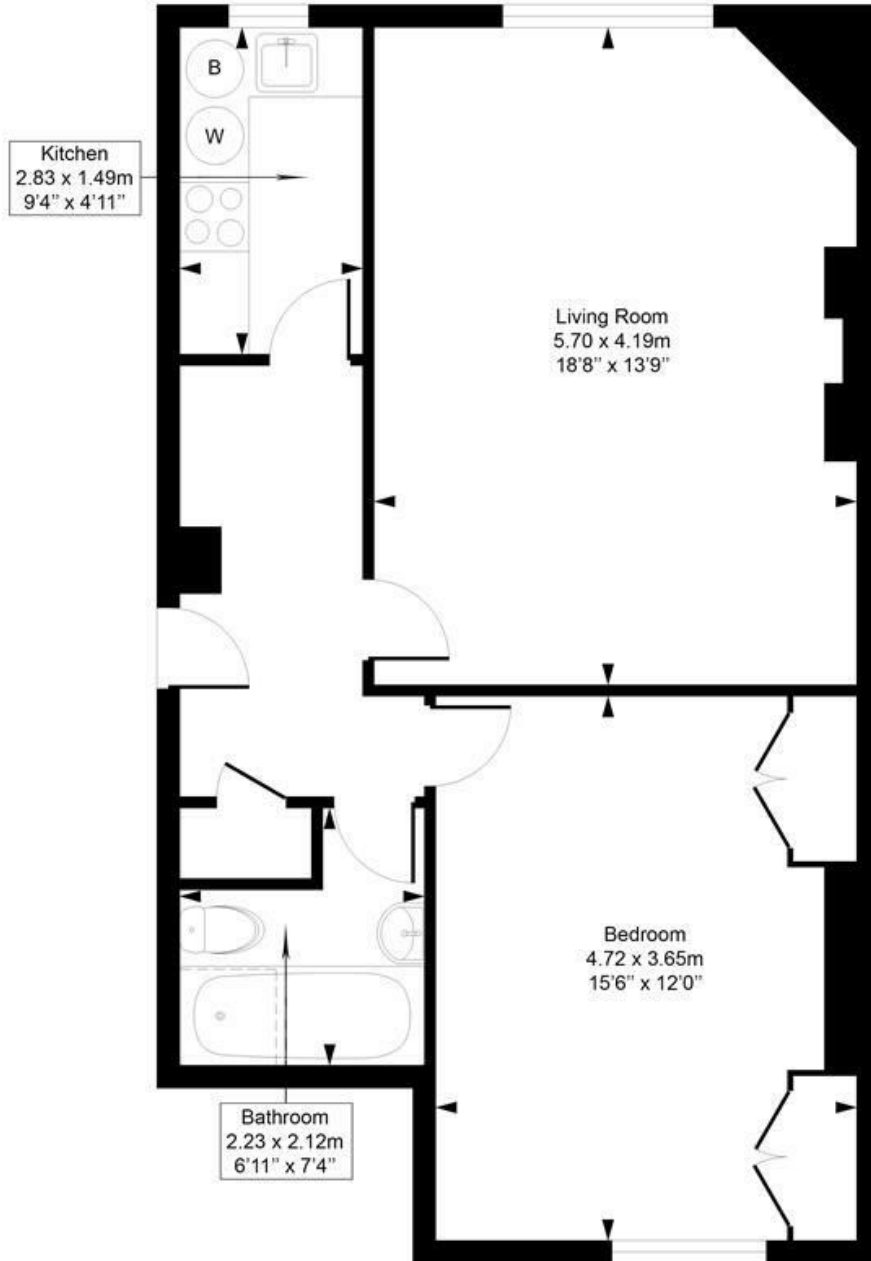
Extremely spacious 1 bedroom apartment
628 Sq Ft / 58.4 Sq M
Large double bedroom with fitted wardrobes
High ceilings and large windows
South Hampstead conservation area

Raised ground floor within period conversion
Impressive 18' reception room
Modern fitted kitchen and bathroom
2 minute walk to Finchley Road underground
EPC energy rating C / Council tax: Camden band D

West Hampstead Office 020 7794 7111

Canfield Gardens

Approximate Gross Internal Area = 58.4 Sq m / 628 sq ft



Raised Ground Floor

This plan is for layout guidance only. Drawn in accordance with RICS guidelines. Not drawn to scale unless stated. Windows & door openings are approximate. Whilst every care is taken in the preparation of this plan, please check all dimensions, shapes & compass bearings before marking any decisions reliant upon them.

ELLIE CLAIRE PHOTOGRAPHY LTD
www.ellieclairephotography.com

The particulars do not constitute part of an offer or contract. The particulars, including text, photographs and plans, are for the guidance only of prospective purchasers/tenants and must not be relied upon as statements of fact. The descriptions provided therein represent the opinion of the author and whilst given in good faith should not be construed as statements of fact. Nothing in these particulars shall be deemed a statement that the property is in good condition or otherwise or that any services or facilities are in good working order. All measurements are approximate