

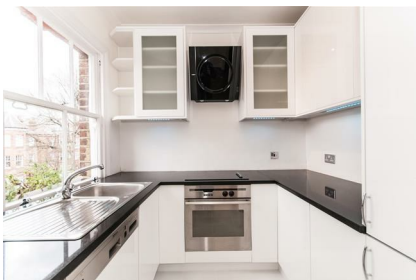
# Parkheath

*Sold on Service*

---

**Goldhurst Terrace NW6**

**£2,950 PCM (£681 per week) - Camden Band D**

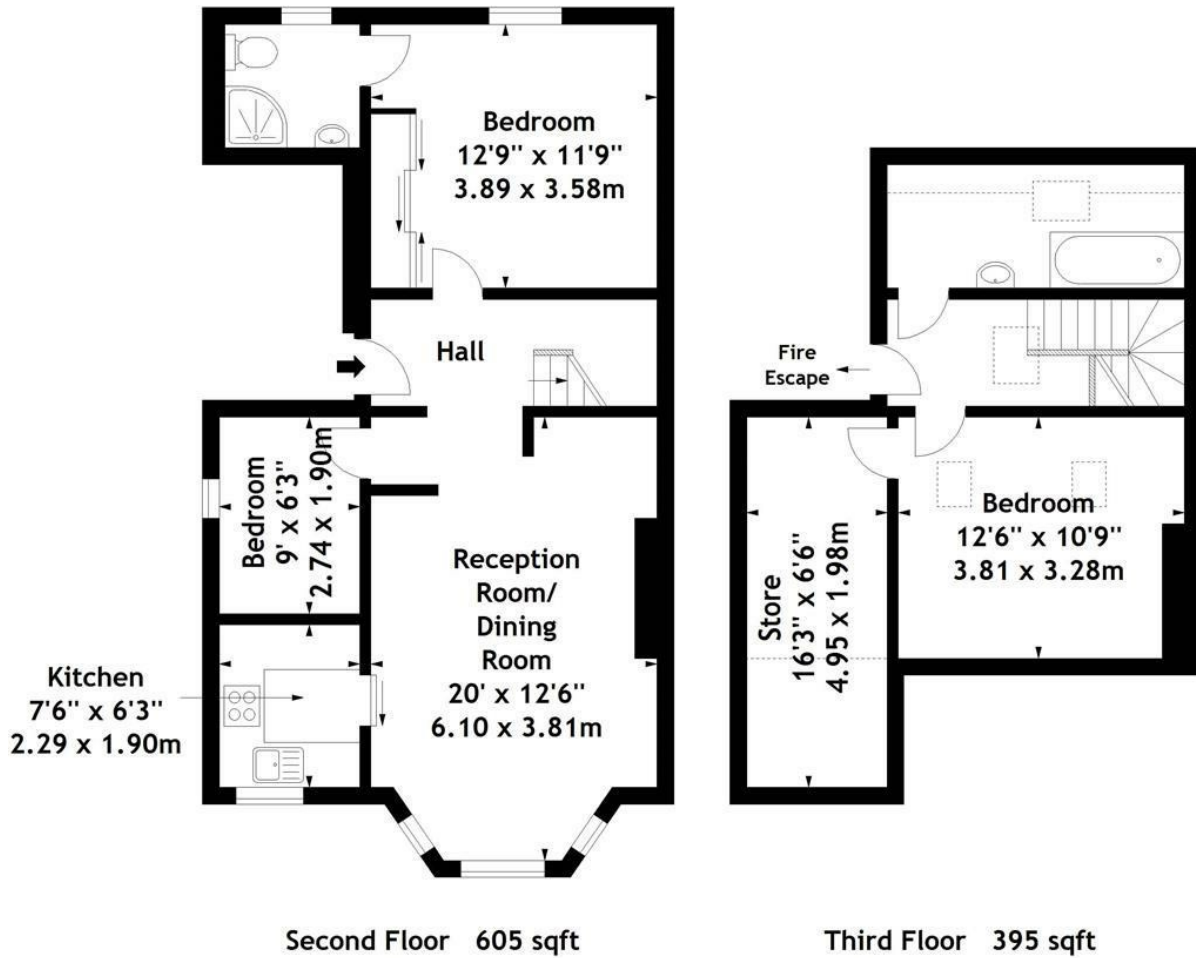


3 bedroom duplex flat  
2 bathrooms (1 en-suite shower room)  
Reception/dining room  
Contemporary fitted kitchen  
Close to local amenities and transport

2nd and 3rd floors of a period conversion  
2 double bedrooms & 1 single/study  
Wood flooring  
Off street parking for 1 car  
EPC: Rating E, Council Tax: Camden band D

West Hampstead Office 020 7794 7111

Goldhurst Terrace, NW6  
Approx. Gross Internal Area  
1000 Sq Ft - 92.90 Sq M



Measured in accordance with RICS guidelines. Every attempt is made to ensure accuracy, however all measurements are approximate. This floor plan is for illustrative purposes only and is not to scale.  
© Datography Ltd 2014  
Photographs \* Floorplans \* Virtual Tours  
Tel: 0845 643 4401 [www.datography.com](http://www.datography.com)

The particulars do not constitute part of an offer or contract. The particulars, including text, photographs and plans, are for the guidance only of prospective purchasers/tenants and must not be relied upon as statements of fact. The descriptions provided therein represent the opinion of the author and whilst given in good faith should not be construed as statements of fact. Nothing in these particulars shall be deemed a statement that the property is in good condition or otherwise or that any services or facilities are in good working order. All measurements are approximate