

Parkheath

Sold on Service

Greencroft Gardens NW6
£3,467 PCM
(Camden Band G)



3 bedrooms

Period conversion

Original wooden floors and high ceilings

South Hampstead conservation Area

Council Tax: Band G (Camden)

2 bathrooms (1 en-suite shower room)

Stunning open plan kitchen with large central island

Good internal storage

Off street parking for 1 car

South Hampstead Office 020 7625 4567

West Hampstead Office 020 7794 7111

Greencroft Gardens

Approximate Gross Internal Area = 115.3 Sq m / 1242 sq ft

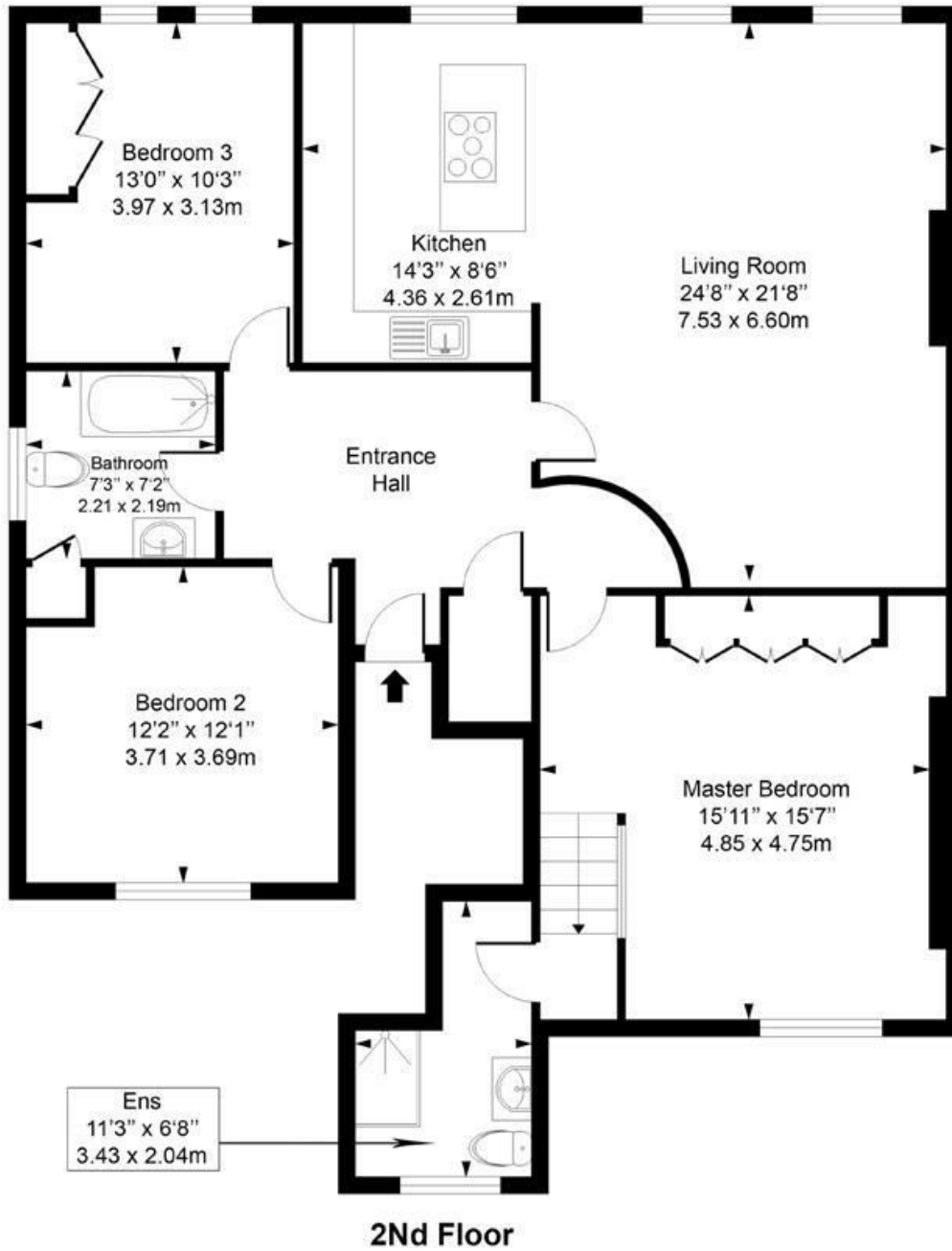


Illustration for identification purposes only, measurements are approximate, not to scale. FloorplansUsketch.com © 2019 (ID551192)
ELLIE CLAIRE PHOTOGRAPHY LTD

The particulars do not constitute part of an offer or contract. The particulars, including text, photographs and plans, are for the guidance only of prospective purchasers/tenants and must not be relied upon as statements of fact. The descriptions provided therein represent the opinion of the author and whilst given in good faith should not be construed as statements of fact. Nothing in these particulars shall be deemed a statement that the property is in good condition or otherwise or that any services or facilities are in good working order. All measurements are approximate