

Parkheath

Sold on Service

Canfield Gardens NW6

£2,000 PCM (£462 per week) - Camden Band D



Very spacious & attractive 1 bedroom flat

Large windows with stained glass panels

18' bedroom with bay window

577 Sq Ft / 53.60 Sq M

Approx. 7 minute walk to West Hampstead underground station

Raised ground floor conversion

16'3 reception/dining room

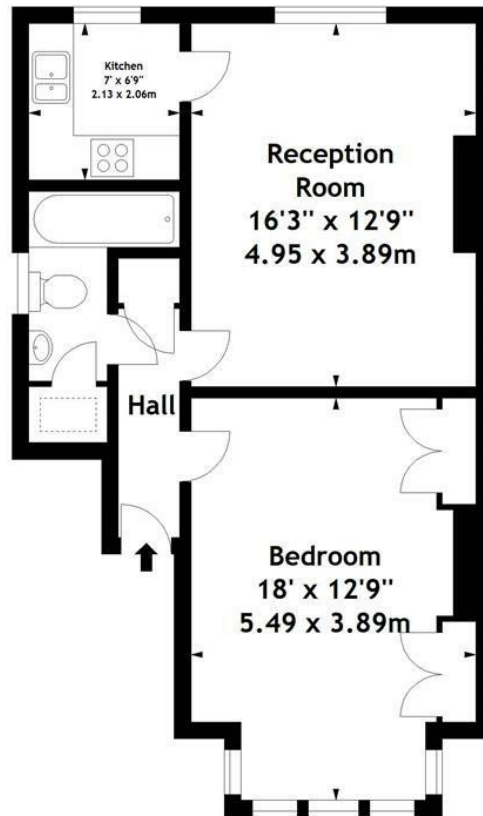
High ceilings

Close to Finchley Road transport and amenities

EPC energy rating D / Council tax: Camden band D

West Hampstead Office 020 7794 7111

Canfield Gardens, NW6
Approx. Gross Internal Area
577 Sq Ft - 53.60 Sq M



Raised Ground Floor

Measured in accordance with RICS guidelines. Every attempt is made to ensure accuracy, however all measurements are approximate. This floor plan is for illustrative purposes only and is not to scale.

© Datography Ltd 2014
Photographs * Floorplans * Virtual Tours
Tel: 0845 643 4401 www.datography.com

The particulars do not constitute part of an offer or contract. The particulars, including text, photographs and plans, are for the guidance only of prospective purchasers/tenants and must not be relied upon as statements of fact. The descriptions provided therein represent the opinion of the author and whilst given in good faith should not be construed as statements of fact. Nothing in these particulars shall be deemed a statement that the property is in good condition or otherwise or that any services or facilities are in good working order. All measurements are approximate