

Parkheath

Sold on Service

Fordwych Road NW2

£1,993 PCM (£460 per week) - Camden Band D



2 double bedroom flat

823 Sq Ft / 76.46 Sq M

Separate kitchen

Approx 6 minute walk to Cricklewood Thameslink station

West Hampstead Office 020 7794 7111

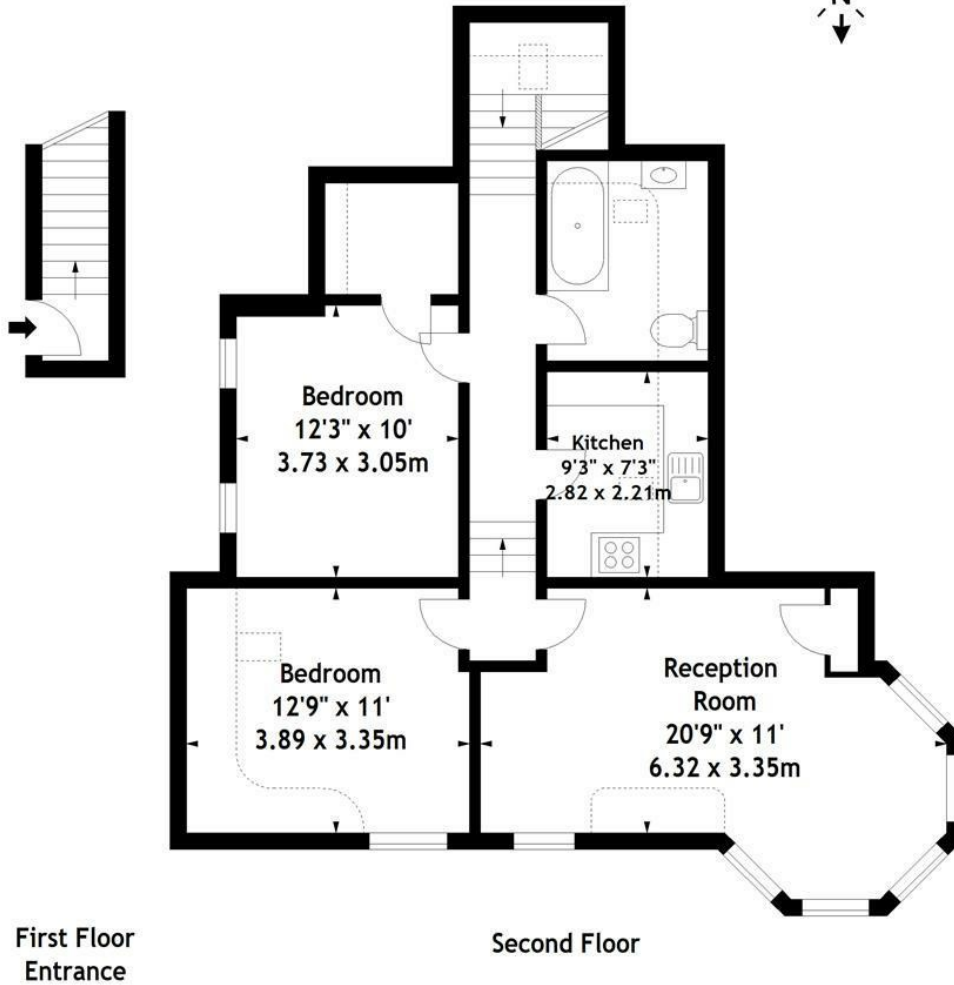
2nd floor of a period conversion (entrance from first floor)

Spacious reception/dining room with bay window

3 piece bathroom

EPC: Rating D, Council Tax: Camden band D

Fordwych Road, NW2
Approx. Gross Internal Area
823 Sq Ft - 76.46 Sq M



Measured in accordance with RICS guidelines. Every attempt is made to ensure accuracy, however all measurements are approximate. This floor plan is for illustrative purposes only and is not to scale.
© Datography Ltd 2017
Photographs * Floorplans * Virtual Tours
Tel: 0845 643 4401 www.datography.com

The particulars do not constitute part of an offer or contract. The particulars, including text, photographs and plans, are for the guidance only of prospective purchasers/tenants and must not be relied upon as statements of fact. The descriptions provided therein represent the opinion of the author and whilst given in good faith should not be construed as statements of fact. Nothing in these particulars shall be deemed a statement that the property is in good condition or otherwise or that any services or facilities are in good working order. All measurements are approximate