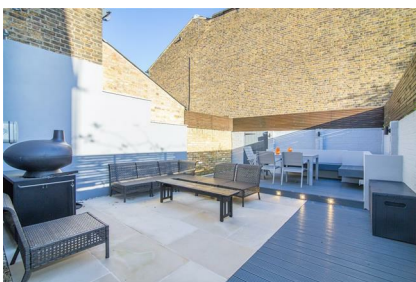


Parkheath

Sold on Service

Agamemnon Road NW6

£5,700 PCM (£1,315 per week) - Camden Band G



Superb and stylish 4 double bedroom family house

2023 Sq Ft / 187.94 Sq M

26' reception room

Master bedroom with dressing room and en suite bathroom

Family bathroom and Guest WC

Sought after residential location

Arranged over 3 levels

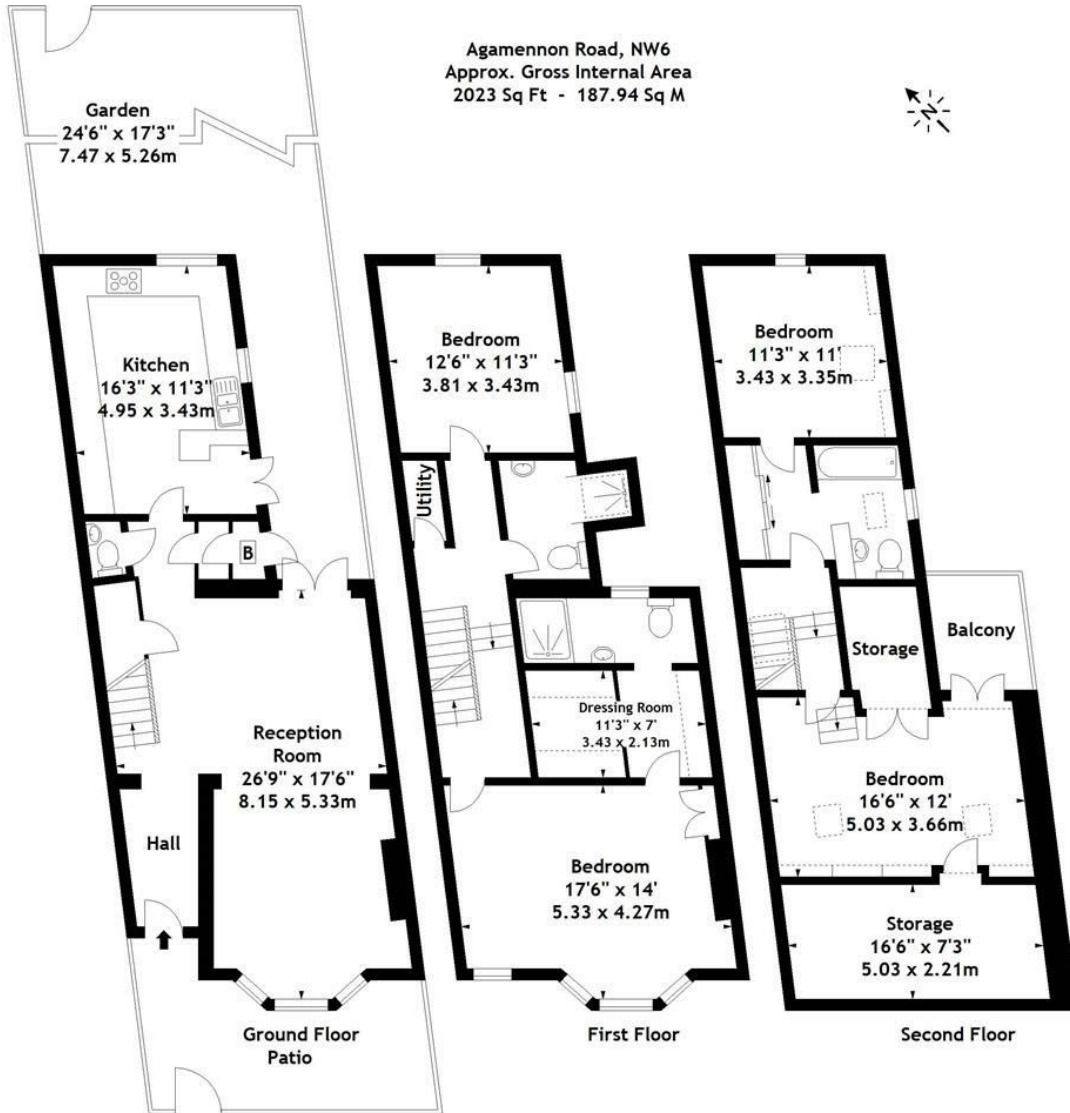
Contemporary kitchen/dining room

3 further double bedrooms

30' south west facing garden

West Hampstead Office 020 7794 7111

Agamennon Road, NW6
Approx. Gross Internal Area
2023 Sq Ft - 187.94 Sq M



Measured in accordance with RICS guidelines. Every attempt is made to ensure accuracy, however all measurements are approximate. This floor plan is for illustrative purposes only and is not to scale.
© Datography Ltd 2014
Photographs * Floorplans * Virtual Tours
Tel: 0845 643 4401 www.datography.com

The particulars do not constitute part of an offer or contract. The particulars, including text, photographs and plans, are for the guidance only of prospective purchasers/tenants and must not be relied upon as statements of fact. The descriptions provided therein represent the opinion of the author and whilst given in good faith should not be construed as statements of fact. Nothing in these particulars shall be deemed a statement that the property is in good condition or otherwise or that any services or facilities are in good working order. All measurements are approximate