

Parkheath

Sold on Service

Belsize Road NW6

£3,100 PCM (£715 per week) - Camdem Band E



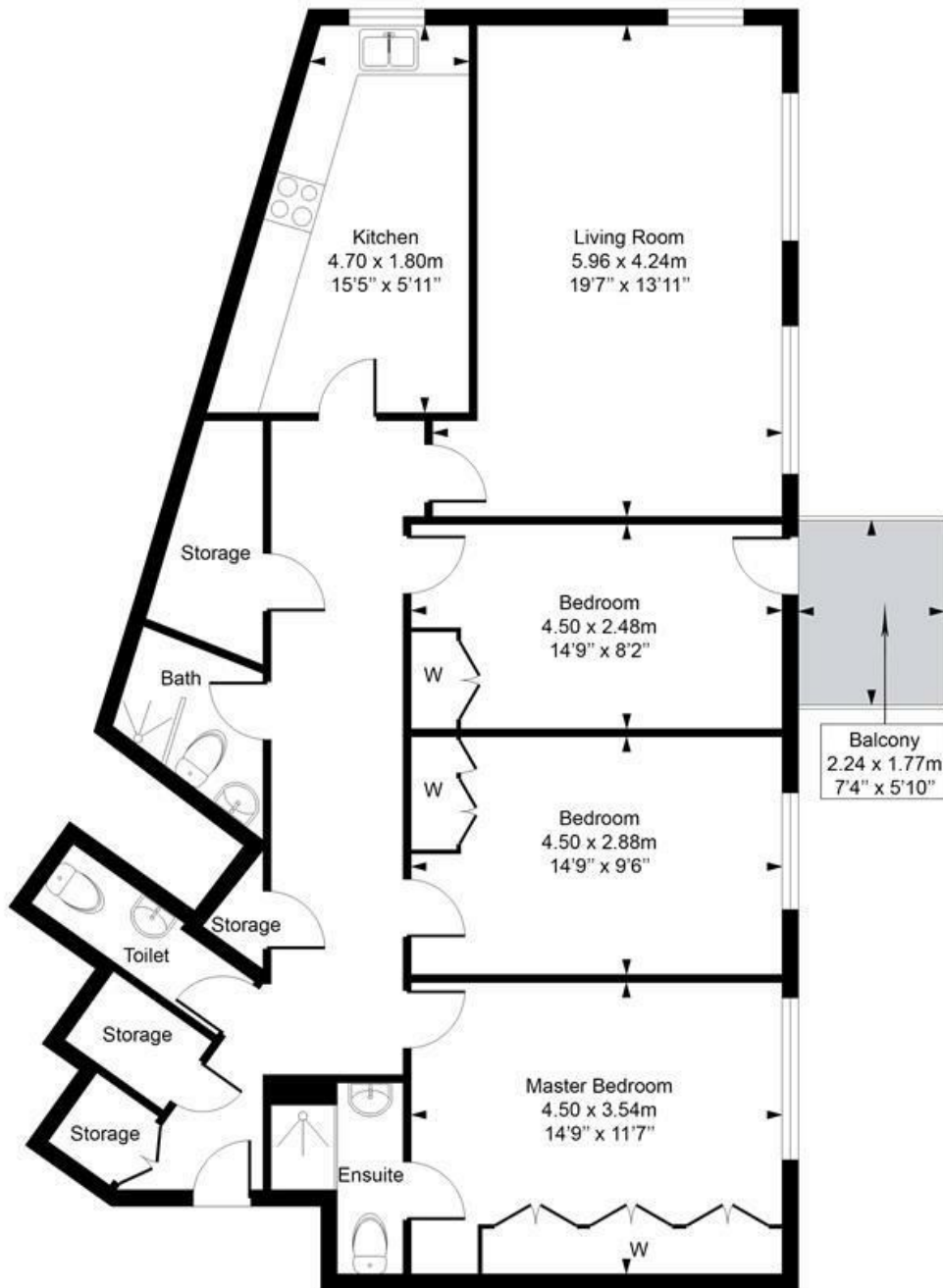
Spacious and well proportioned apartment
2 bathrooms (1 en-suite shower room)
Bright reception room
Balcony (off one of the bedrooms)
4 minute walk to Swiss Cottage underground station

3 double bedrooms with fitted wardrobes
Wood floors throughout
Fitted kitchen with American style fridge/freezer
3rd floor within lift serviced block

West Hampstead Office 020 7794 7111

Belsize Road

Approximate Gross Internal Area = 109 Sq m / 1172 sq ft



Third Floor

This plan is for layout guidance only. Drawn in accordance with RICS guidelines. Not drawn to scale unless stated. Windows & door openings are approximate. Whilst every care is taken in the preparation of this plan, please check all dimensions, shapes & compass bearings before marking any decisions reliant upon them.

ELLIE CLAIRE PHOTOGRAPHY LTD
www.ellieclairephotography.com

The particulars do not constitute part of an offer or contract. The particulars, including text, photographs and plans, are for the guidance only of prospective purchasers/tenants and must not be relied upon as statements of fact. The descriptions provided therein represent the opinion of the author and whilst given in good faith should not be construed as statements of fact. Nothing in these particulars shall be deemed a statement that the property is in good condition or otherwise or that any services or facilities are in good working order. All measurements are approximate