



Compayne Gardens NW6

Parkheath
Sold on Service





Compayne Gardens, NW6 £850,000, Share of Freehold

- Classic first floor 2 bedroom apartment
- Beautiful period features with high ceilings and ornate fireplace
- 2 double bedrooms with fitted storage
- South facing 29" reception kitchen room with beautiful bay window
- 819 sq ft / 76.1 sq m
- Communal garden access
- Set within grand period corner plot house
- South Hampstead conservation area
- Local amenities of West Hampstead. Finchley road and Swiss Cottage all close by
- 5 minute walk to Finchley Road station (Jubilee and Metropolitan lines)

Belsize Park
208 Haverstock Hill
NW3 2AG
Sales 020 7431 1234
Lettings 020 7431 3104
nw3@parkheath.com

South Hampstead
8a Canfield Gardens
NW6 3BS
Sales 020 7625 4567
Lettings 020 7644 0800
nw6@parkheath.com

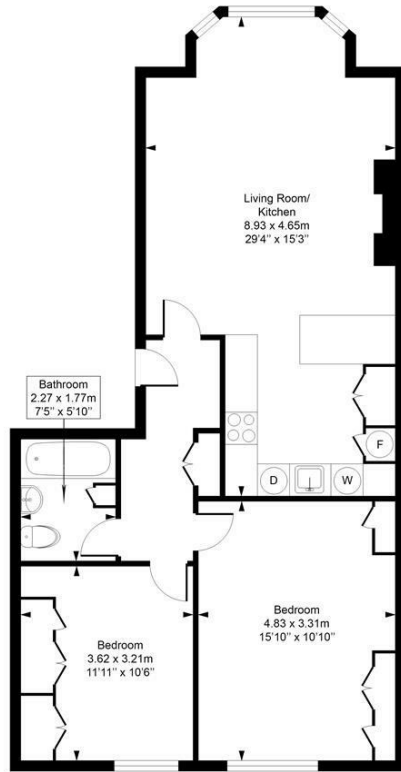
West Hampstead
192 West End Lane
NW6 1SG
Sales & Lettings
Tel 020 7794 7111
192@parkheath.com

Kentish Town
148 Kentish Town Rd
NW1 9QB
Tel 020 7485 0400
kt@parkheath.com

Kensal Rise
54-56 Chamberlayne Rd
NW10 3JH
Tel 020 8960 4845
kensal@parkheath.com

Property Management
192 West End Lane
NW6 1SG
020 7433 6174
pm@parkheath.com

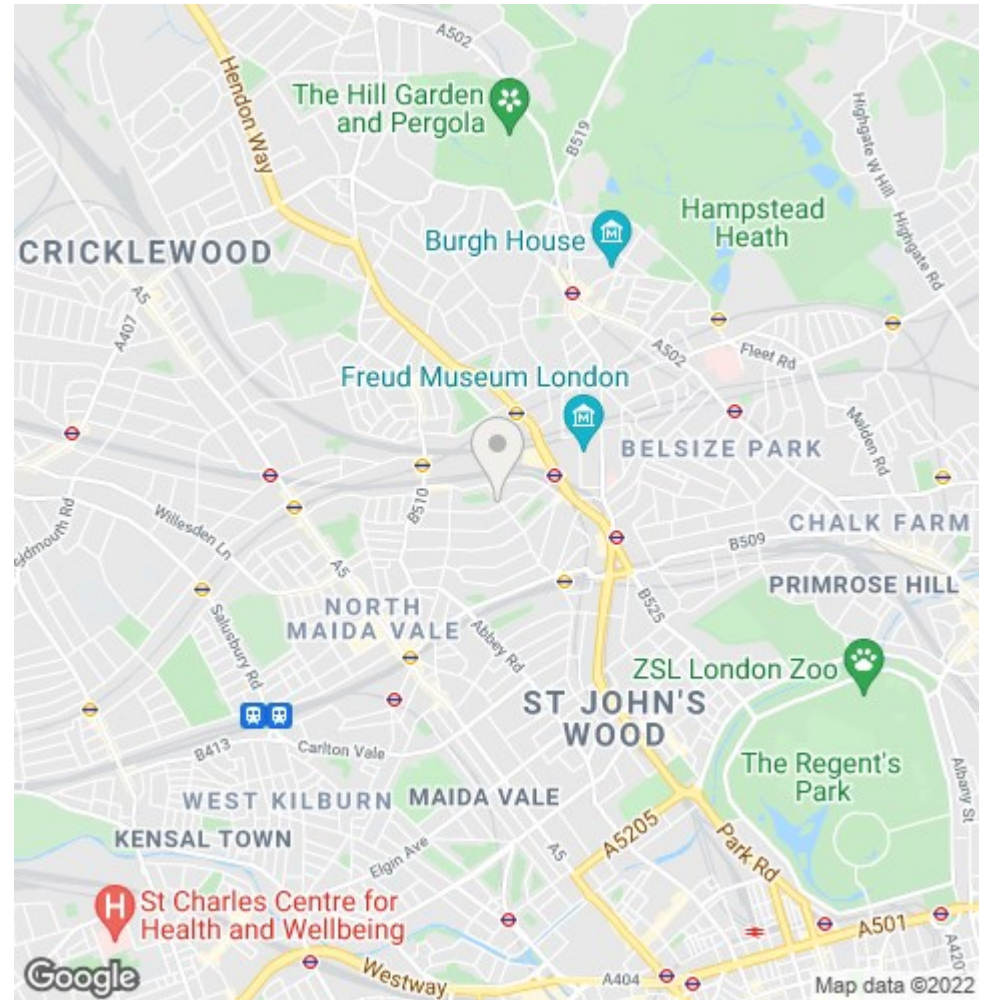
Compayne Gardens
 Approximate Gross Internal Area = 76.1 Sq m / 819 sq ft



First Floor

This plan is for layout guidance only. Drawn in accordance with RICS guidelines. Not drawn to scale unless stated. Windows & door openings are approximate. Whilst every care is taken in the preparation of this plan, please check all dimensions, shapes & compass bearings before marking any decisions reliant upon them.

ELLIE CLAIRE PHOTOGRAPHY LTD
 www.ellieclairephotography.com



The particulars do not constitute part of an offer or contract. The particulars, including text, photographs and plans, are for the guidance only of prospective purchasers/tenants and must not be relied upon as statements of fact. The descriptions provided therein represent the opinion of the author and whilst given in good faith should not be construed as statements of fact. Nothing in these particulars shall be deemed a statement that the property is in good condition or otherwise or that any services or facilities are in good working order. All measurements are approximate