

Parkheath

Sold on Service

Christchurch Avenue NW6
£1,200 PCM (£277 per week) - Brent Band A



Studio apartment with mezzanine platform sleeping area

Open plan kitchen

Wooden floors

Rent inclusive of heating and hot water

6 minute walk to Brondesbury overground service

Extensive landscaped communal garden

En suite shower room

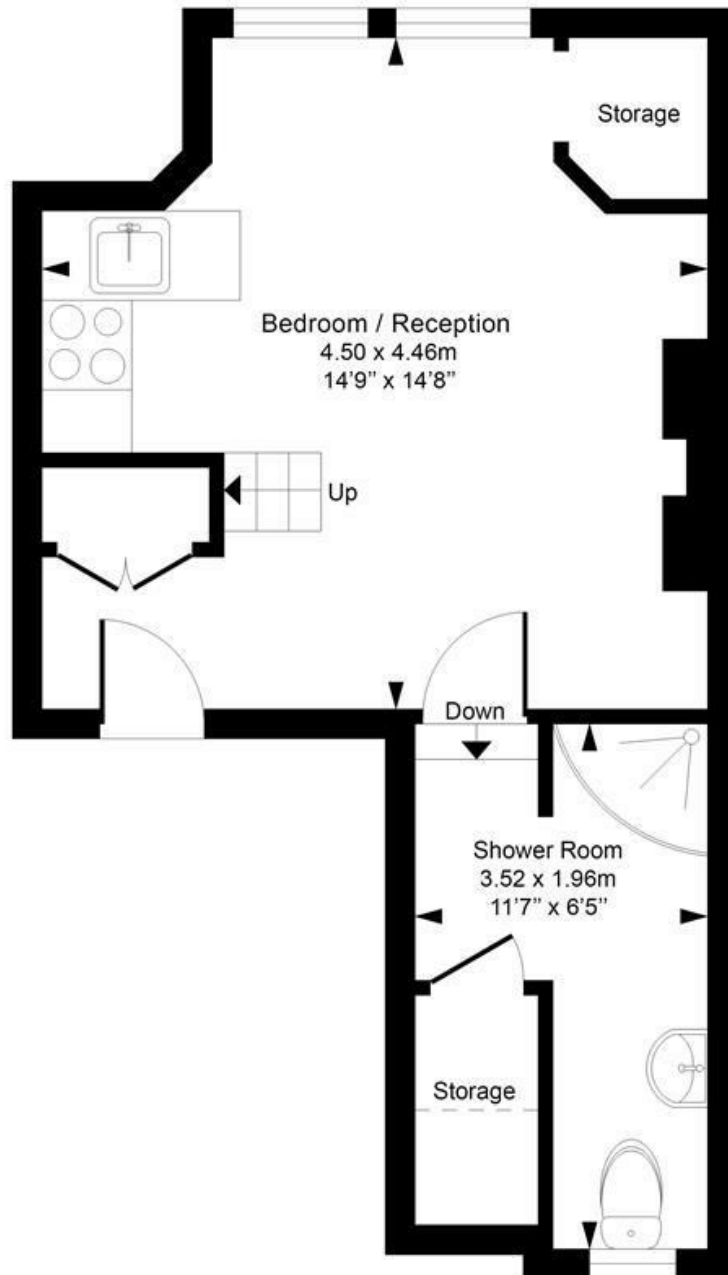
Communal laundry area (£1 per use)

3 minute walk to Kilburn underground (Jubilee line)

EPC energy rating D / Council tax: Brent band A

West Hampstead Office 020 7794 7111

Christchurch Avenue
Approximate Gross Internal Area = 25.7 Sq m / 277 sq ft



Ground Floor

This plan is for layout guidance only. Drawn in accordance with RICS guidelines. Not drawn to scale unless stated. Windows & door openings are approximate. Whilst every care is taken in the preparation of this plan, please check all dimensions, shapes & compass bearings before marking any decisions reliant upon them.

ELLIE CLAIRE PHOTOGRAPHY LTD
www.ellieclairephotography.com

The particulars do not constitute part of an offer or contract. The particulars, including text, photographs and plans, are for the guidance only of prospective purchasers/tenants and must not be relied upon as statements of fact. The descriptions provided therein represent the opinion of the author and whilst given in good faith should not be construed as statements of fact. Nothing in these particulars shall be deemed a statement that the property is in good condition or otherwise or that any services or facilities are in good working order. All measurements are approximate