

Parkheath

Sold on Service

Lymington Road NW6
£3,400 PCM (£785 per week)



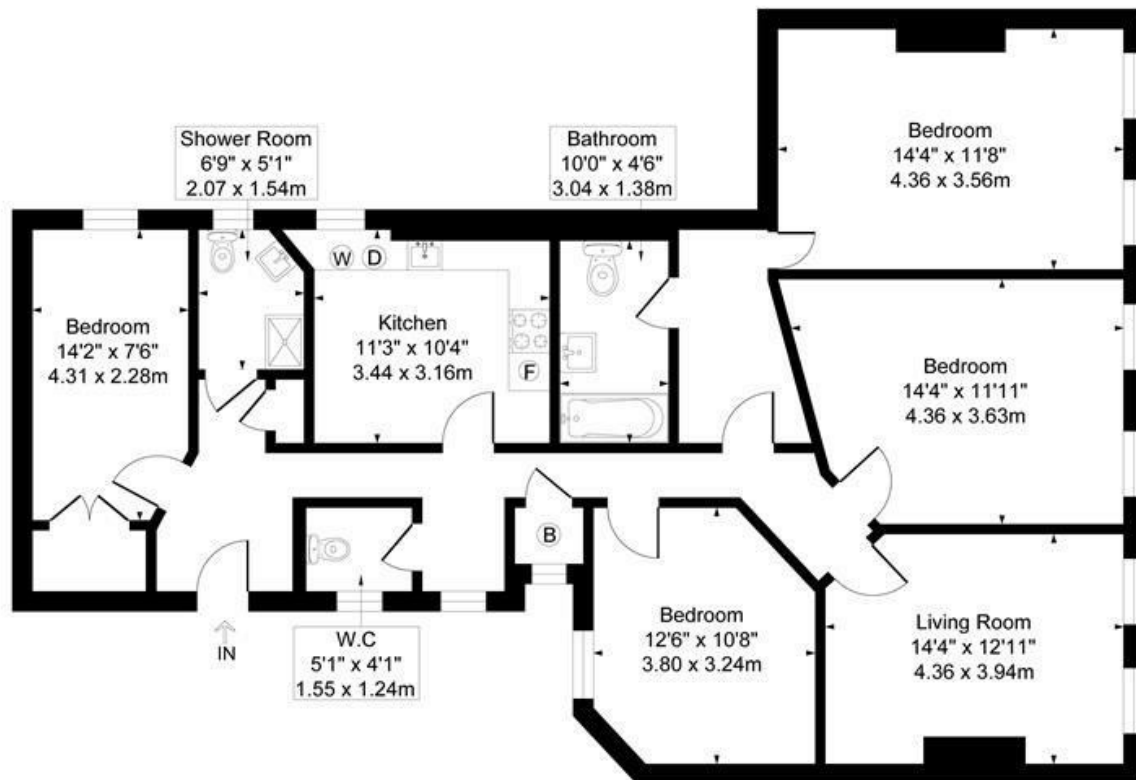
Large 4 double bedroom apartment
Impressive mansion building with lift
Wooden floors and neutral decor
Contemporary kitchen/dining room

1287 Sq Ft / 120 Sq M
Central West Hampstead location
2 bathrooms (1 en suite)
Spacious reception room

South Hampstead Office 020 7625 4567
West Hampstead Office 020 7794 7111

Lymington Mansions

Approximate Gross Internal Area = 120 sq m / 1287 sq ft



First Floor

Measured in accordance with RICS guidelines. Every attempt is made to ensure accuracy
However all measurements are approximate.

The Floor plan is illustrative purposes Only and is not to scale
ELLIE CLAIRE PHOTOGRAPHY LTD

The particulars do not constitute part of an offer or contract. The particulars, including text, photographs and plans, are for the guidance only of prospective purchasers/tenants and must not be relied upon as statements of fact. The descriptions provided therein represent the opinion of the author and whilst given in good faith should not be construed as statements of fact. Nothing in these particulars shall be deemed a statement that the property is in good condition or otherwise or that any services or facilities are in good working order. All measurements are approximate