

# Parkheath

*Sold on Service*

**Carlton Mews NW6**  
**£3,466 PCM (£800 per week) - Band**

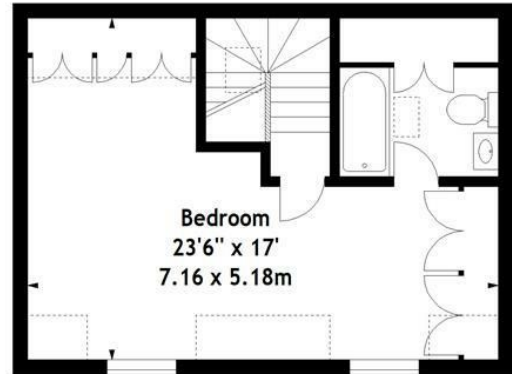


Secure gated complex  
Terrace  
4 bedrooms  
Central West Hampstead location

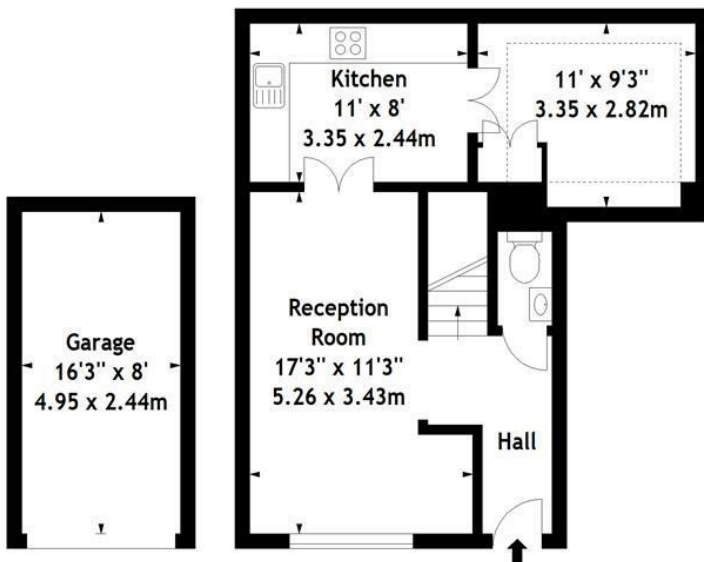
Garage  
Modern house  
2 bathrooms

West Hampstead Office 020 7794 7111

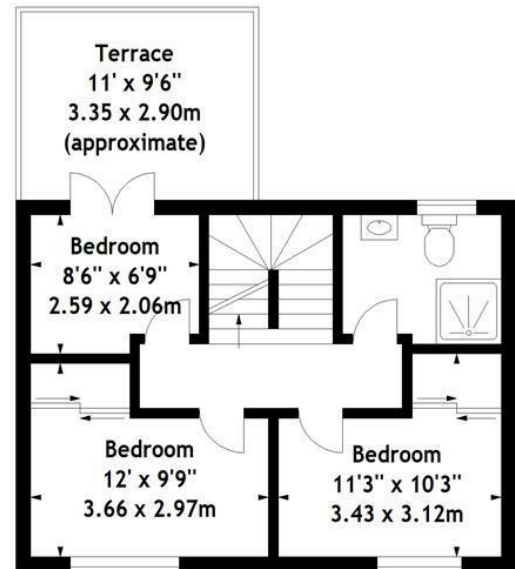
Carlton Mews,  
 West End Lane, NW6  
 Approx. Gross Internal Area  
 1280 Sq Ft - 118.91 Sq M  
 Garage  
 Approx. Gross Internal Area  
 130 Sq Ft - 12.08 Sq M



Second Floor



Ground Floor



First Floor

Measured in accordance with RICS guidelines. Every attempt is made to ensure accuracy, however all measurements are approximate. This floor plan is for illustrative purposes only and is not to scale.  
 © Datography Ltd 2015  
 Photographs \* Floorplans \* Virtual Tours  
 Tel: 0845 643 4401 www.datography.com

The particulars do not constitute part of an offer or contract. The particulars, including text, photographs and plans, are for the guidance only of prospective purchasers/tenants and must not be relied upon as statements of fact. The descriptions provided therein represent the opinion of the author and whilst given in good faith should not be construed as statements of fact. Nothing in these particulars shall be deemed a statement that the property is in good condition or otherwise or that any services or facilities are in good working order. All measurements are approximate