

Parkheath

Sold on Service

Greencroft Gardens NW6
£6,000 PCM (£1,384 per week)



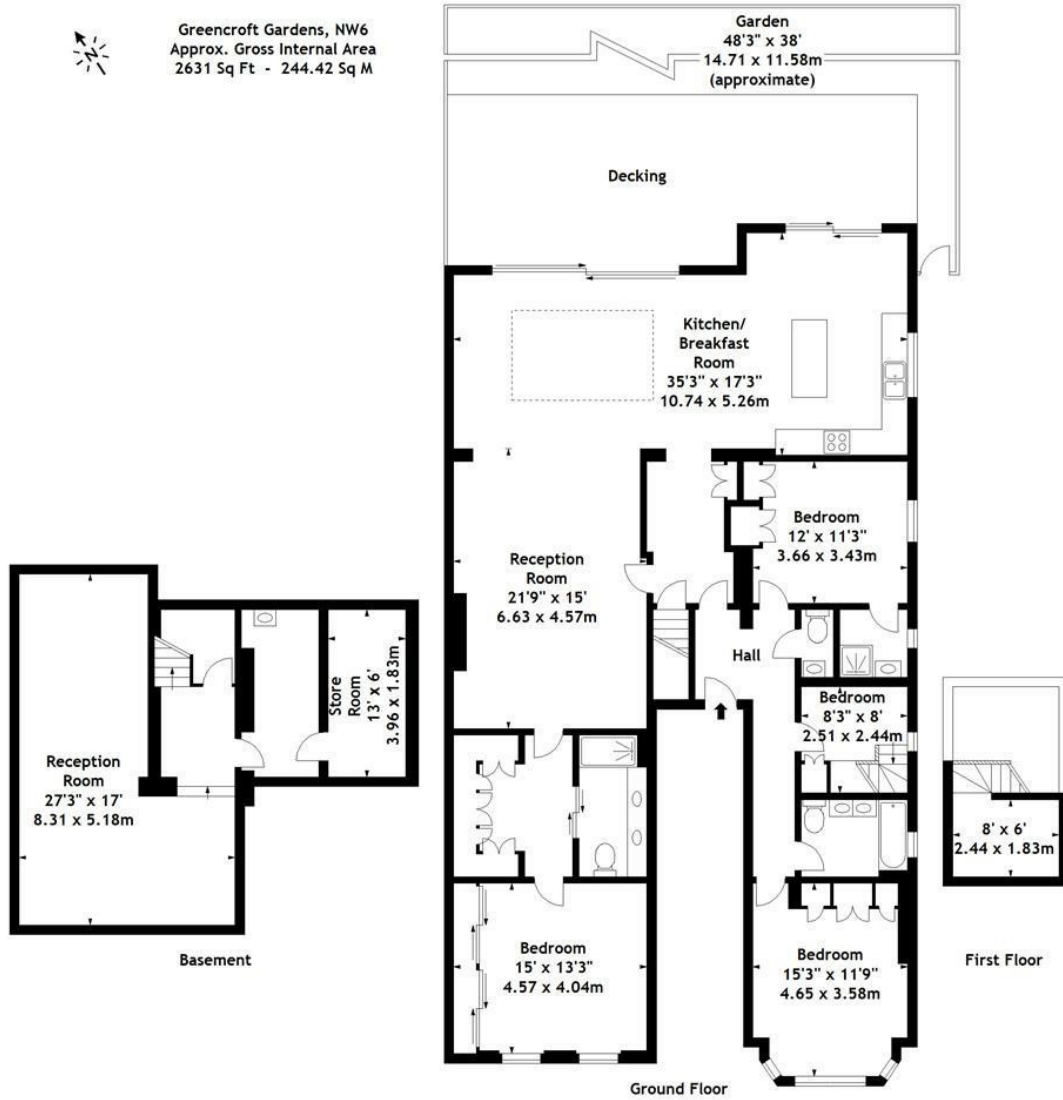
Large private garden
Large ground level duplex apartment
Outstanding kitchen/dining area
Period property

Off street parking
4 bedrooms, 3 bathrooms
Sought after conservation area
Pet friendly Landlord

South Hampstead Office 020 7625 4567
West Hampstead Office 020 7794 7111



Greencroft Gardens, NW6
Approx. Gross Internal Area
2631 Sq Ft - 244.42 Sq M



Measured in accordance with RICS guidelines. Every attempt is made to ensure accuracy, however all measurements are approximate. This floor plan is for illustrative purposes only and is not to scale.
© Datagraphy Ltd 2016
Photographs * Floorplans * Virtual Tours
Tel: 0845 643 4401 www.datagraphy.com

The particulars do not constitute part of an offer or contract. The particulars, including text, photographs and plans, are for the guidance only of prospective purchasers/tenants and must not be relied upon as statements of fact. The descriptions provided therein represent the opinion of the author and whilst given in good faith should not be construed as statements of fact. Nothing in these particulars shall be deemed a statement that the property is in good condition or otherwise or that any services or facilities are in good working order. All measurements are approximate