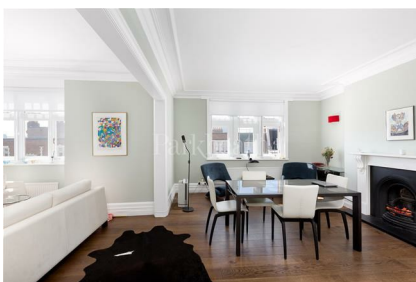


Parkheath

Sold on Service

Cannon Hill NW6

£4,312 PCM (£995 per week) - Band



Exceptional 4 bedroom apartment

33' reception room

Moments to West Hampstead amenities

On site porters

Stunning communal gardens

3 bathrooms (2 en suite)

1922 Sq Ft / 178.55 Sq M

Short walk into Hampstead

Highly sought after BAM Estate

West Hampstead Office 020 7794 7111

Marlborough Mansions,
Cannon Hill, NW6
Approx. Gross Internal Area
1922 Sq Ft - 178.55 Sq M



Third Floor

Measured in accordance with RICS guidelines. Every attempt is made to ensure accuracy, however all measurements are approximate. This floor plan is for illustrative purposes only and is not to scale.
© Datography Ltd 2015
Photographs * Floorplans * Virtual Tours
Tel: 0845 643 4401 www.datography.com

The particulars do not constitute part of an offer or contract. The particulars, including text, photographs and plans, are for the guidance only of prospective purchasers/tenants and must not be relied upon as statements of fact. The descriptions provided therein represent the opinion of the author and whilst given in good faith should not be construed as statements of fact. Nothing in these particulars shall be deemed a statement that the property is in good condition or otherwise or that any services or facilities are in good working order. All measurements are approximate