

Parkheath

Sold on Service

Agamemnon Road NW6

£4,117 PCM (£950 per week) - Camden Band F



Spacious 4 bedroom town house

Arranged over 4 floors

Fully equipped semi open plan kitchen

First floor reception room

Highly sought after location within the Greek Roads

Reception/dining area leading to rear garden

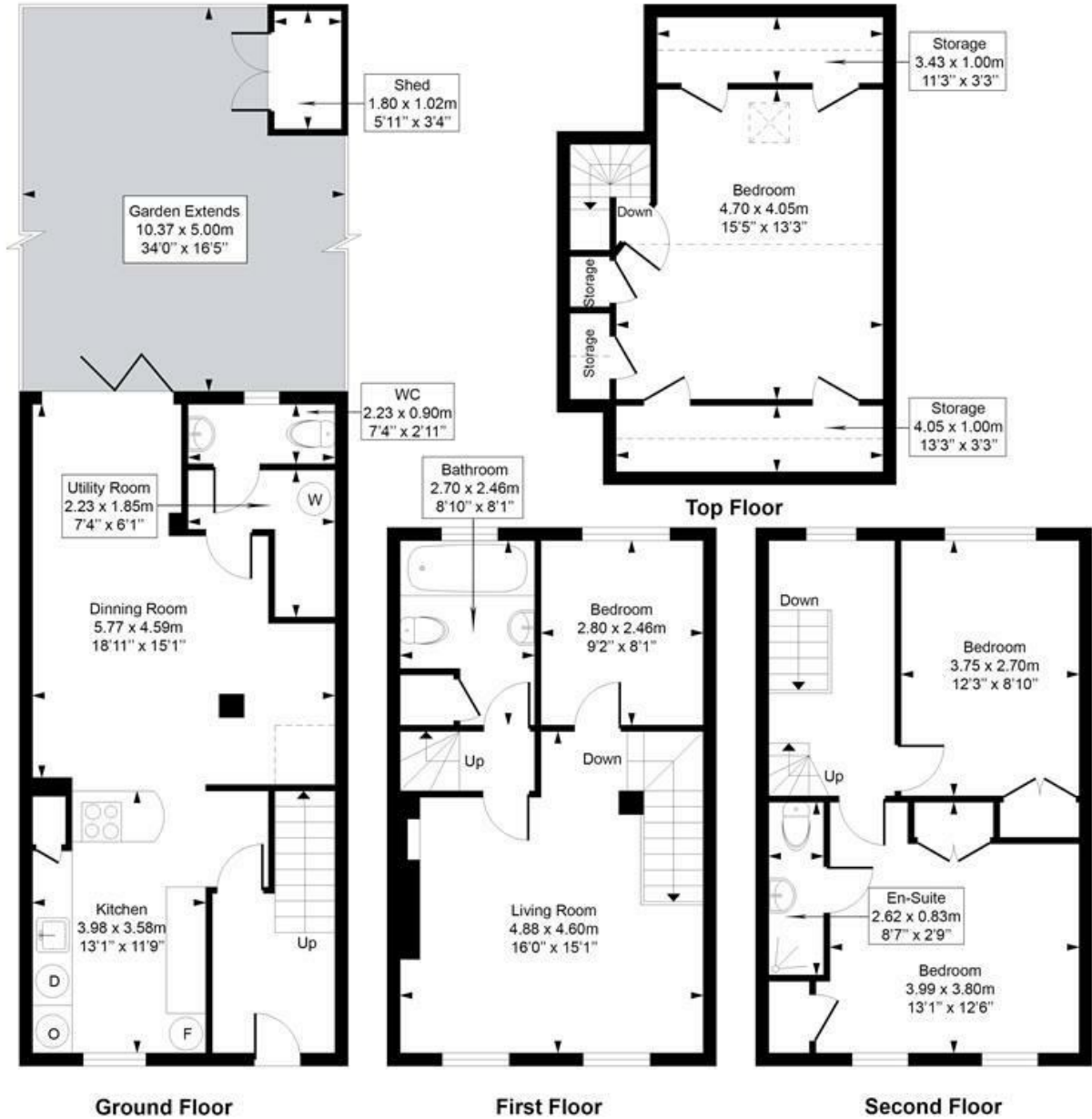
Downstairs utility area with WC

2 bathrooms (1 en suite shower room)

West Hampstead Office 020 7794 7111

Agamemnon Road

Approximate Gross Internal Area = 170.5 Sq m / 1835 sq ft (Including Shed, Storage)
 Approximate Gross Internal Area = 160.7 Sq m / 1729 sq ft (Excluding Shed, Storage)



Measured in accordance with RICS guidelines. Every attempt is made to ensure accuracy
 However all measurements are approximate.
 The floor plan is illustrative purposes only and is not to scale
 ELLIE CLAIRE PHOTOGRAPHY LTD
www.ellieclairephotography.com

The particulars do not constitute part of an offer or contract. The particulars, including text, photographs and plans, are for the guidance only of prospective purchasers/tenants and must not be relied upon as statements of fact. The descriptions provided therein represent the opinion of the author and whilst given in good faith should not be construed as statements of fact. Nothing in these particulars shall be deemed a statement that the property is in good condition or otherwise or that any services or facilities are in good working order. All measurements are approximate